



LION BROTHERS

S/S 24 TREND

# SS/24 TRENDS



## GLISTEN

Unexpected shimmer highlights, infusing metallic and iridescent, and prismatic light.



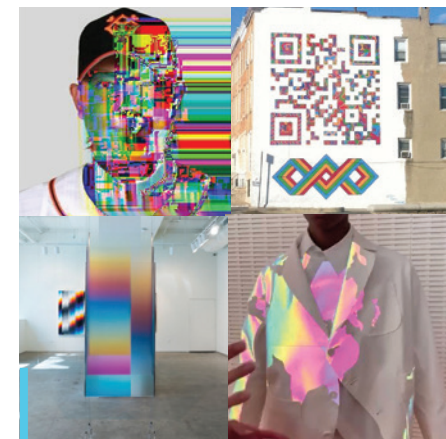
## FRESH

Bold throwback color blocking using traditional craft, fused with active elements.



## POSH

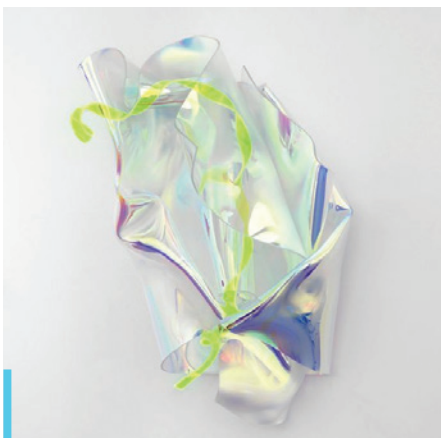
Blended tones and textures with surprising contrast and tactile appeal.



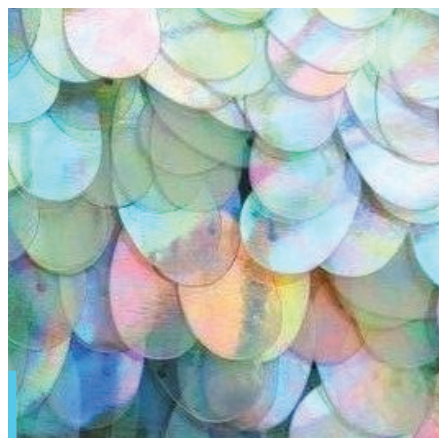
## META

Infusing technology with reality, creating fluid interactions between worlds.

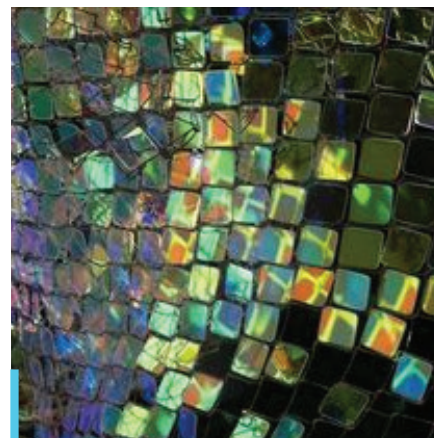
# GLISTEN



Textured materials mixed with a hint of iridescent shine.



Updated sequin shapes add tactility and an element of interaction to designs.



Pairing metallic and iridescent shine with dark and printed materials.



Layering tonal reflective materials to create an iridescent effect.

# KENZO

## FRAMIS & FILM ON PRINTED STEP CLOTH

These two different builds of the same design, both feature a layer of film surrounding a printed ground material. Semitransparent film is a great way to bring dimension to a look while keeping the product light weight.

## DESIGN GUIDELINES

### 4302N1625016

- Sublimation on Step Cloth is color matchable.

### 4302N1625089

- Foil is available in a limited color pallet. Digital material color cards are available upon request.
- Foil must be top layer.
- Please note, foil cap will acquire a similar surface texture to the material it is applied to.



WASH TESTED



COMPLETELY  
RECYCLABLE



FROM RECYCLED  
POLYESTER



KENZO



KENZO





# FIORUCCI

## FILM ON PRINTED SUEDE

---

Smooth iridescent film and supple printed suede combine to make a rich and clean look.

## DESIGN GUIDELINES

---

### 4302N1625022

- Foil is available in a limited color pallet. Digital material color cards are available upon request.
- Foil must be top layer.
- Please note, foil cap will acquire a similar surface texture to the material it is applied



WASH TESTED



COMPLETELY  
RECYCLABLE



FROM RECYCLED  
POLYESTER











## BALTIMORE ORIOLES

### SEQUINS ON PRINTED TWILL

---

Lion sequins are now offered in a new square shape. Putting a slight spin on a classic technique. All our previously available sequin colors and finishes are available in this new shape.

### DESIGN GUIDELINES

---

#### 6000N1625029

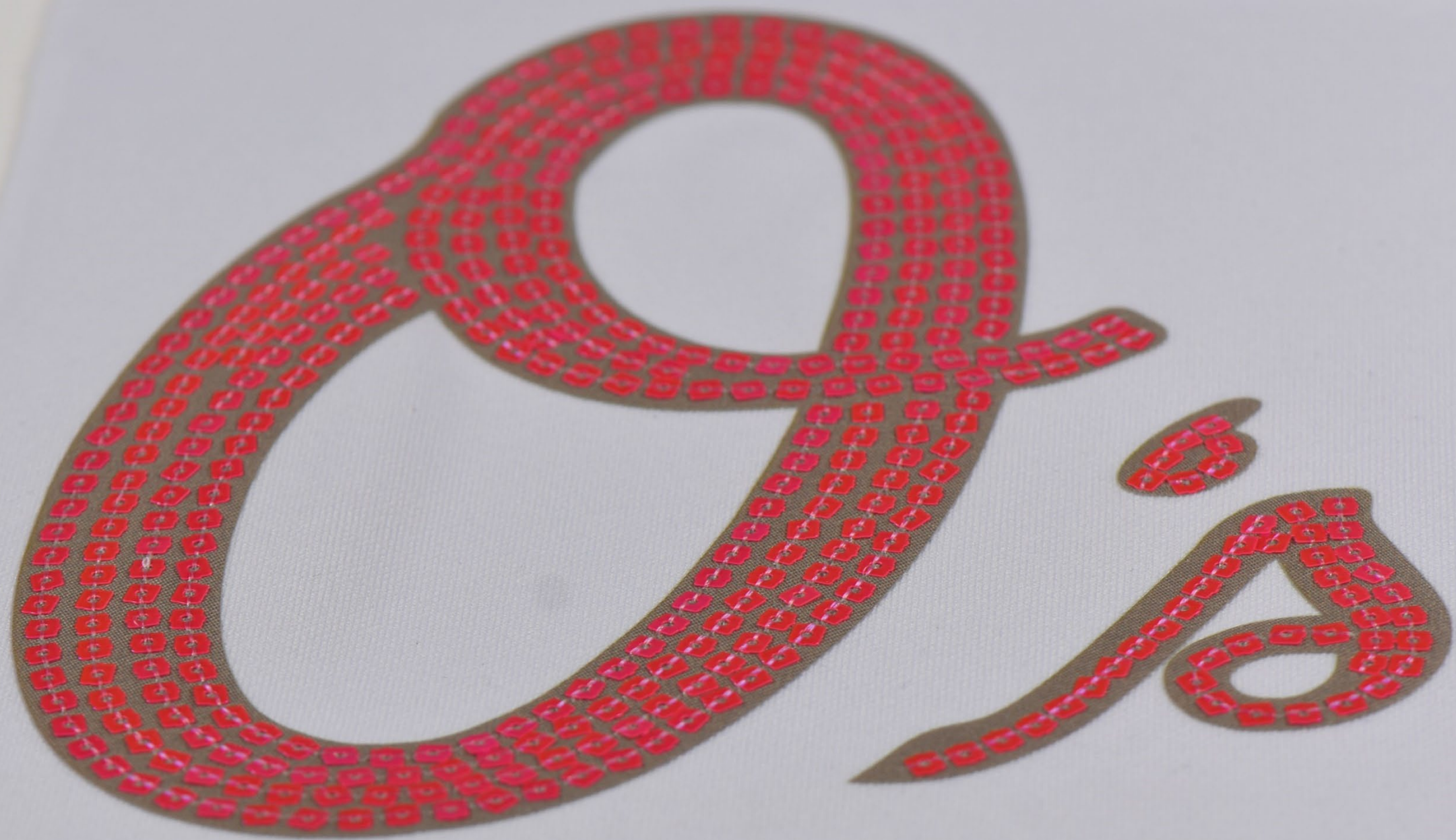
- Sequins are available in a limited color pallet. Digital color cards are available upon request.
- Sequins cannot require exact placement—designs should accommodate 1mm of movement.



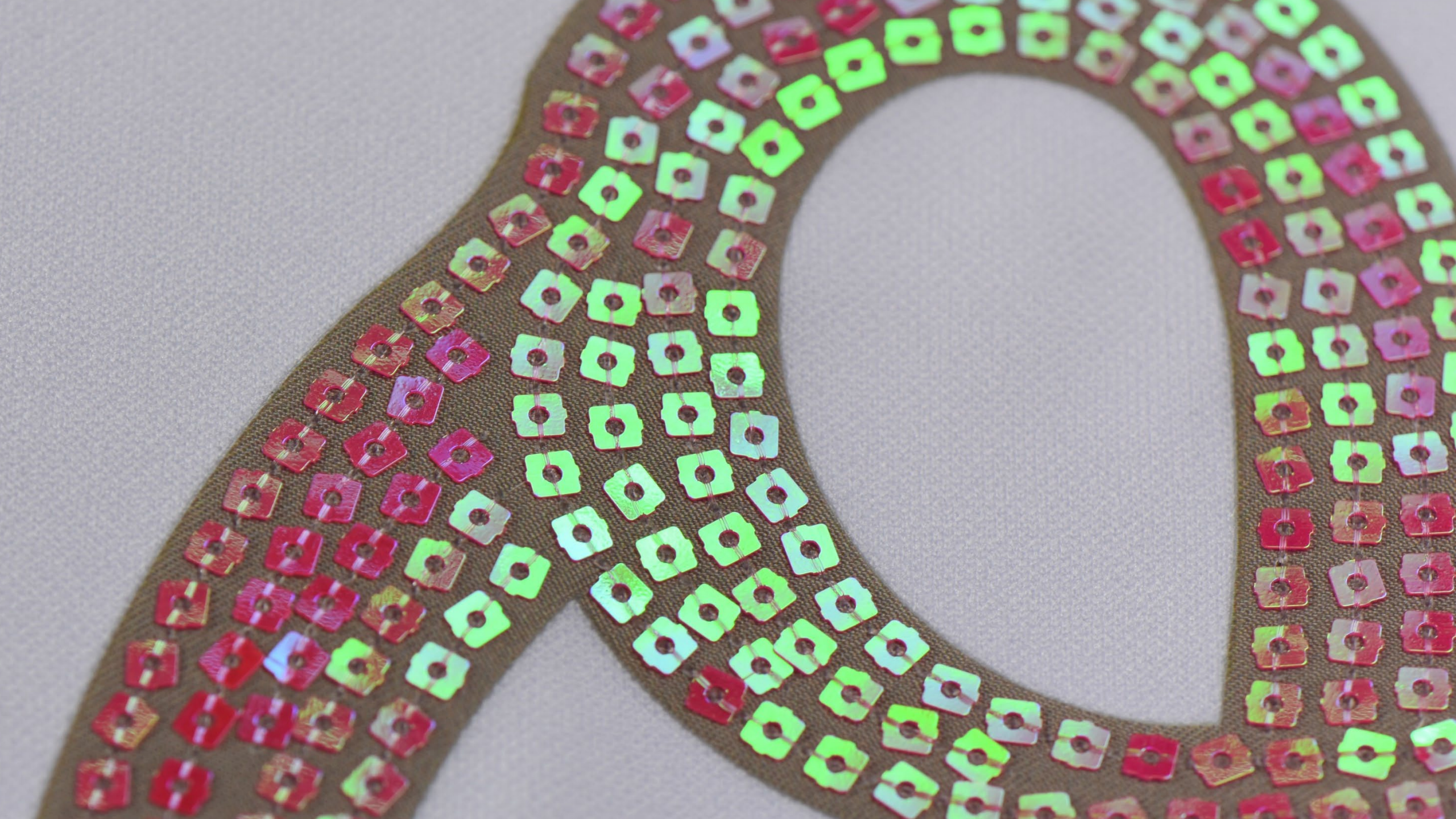
WASH TESTED

FROM RECYCLED  
MATERIAL











## WNBA

### SEQUINS ON PRINTED POLY PRO

---

Precision placement of sequins now allows us to overlap sequins in a scaled pattern. Lion's new square shaped sequins are available in all previous colors and finishes.

### DESIGN GUIDELINES

---

#### 6000N1625028

- Sequins are available in a limited color pallet. Digital color cards are available upon request.
- Sequins cannot require exact placement—designs should accommodate 1mm of movement.

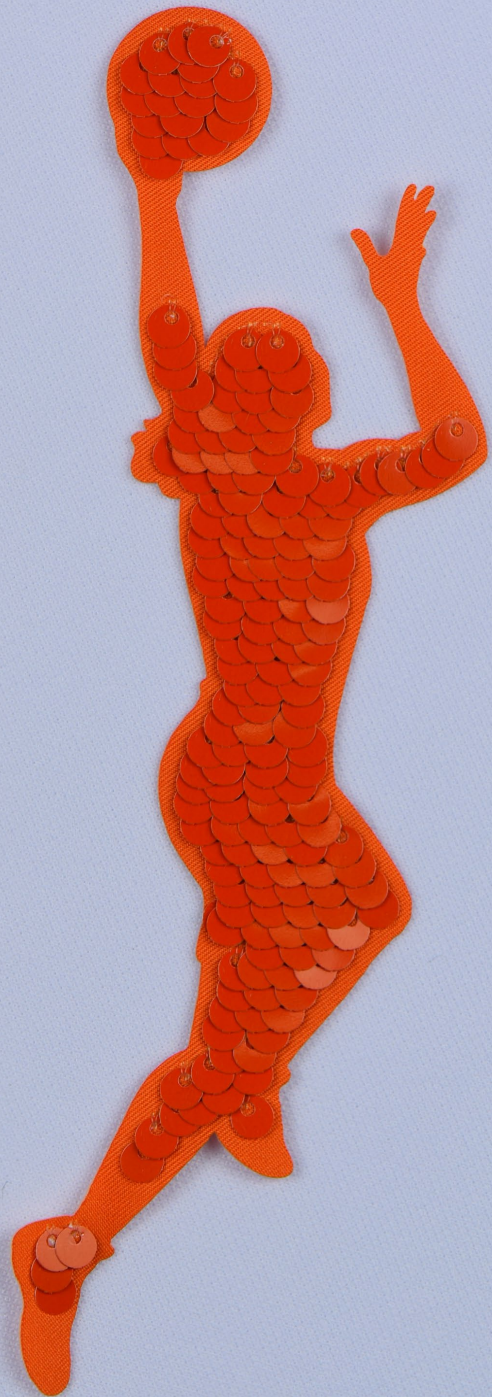


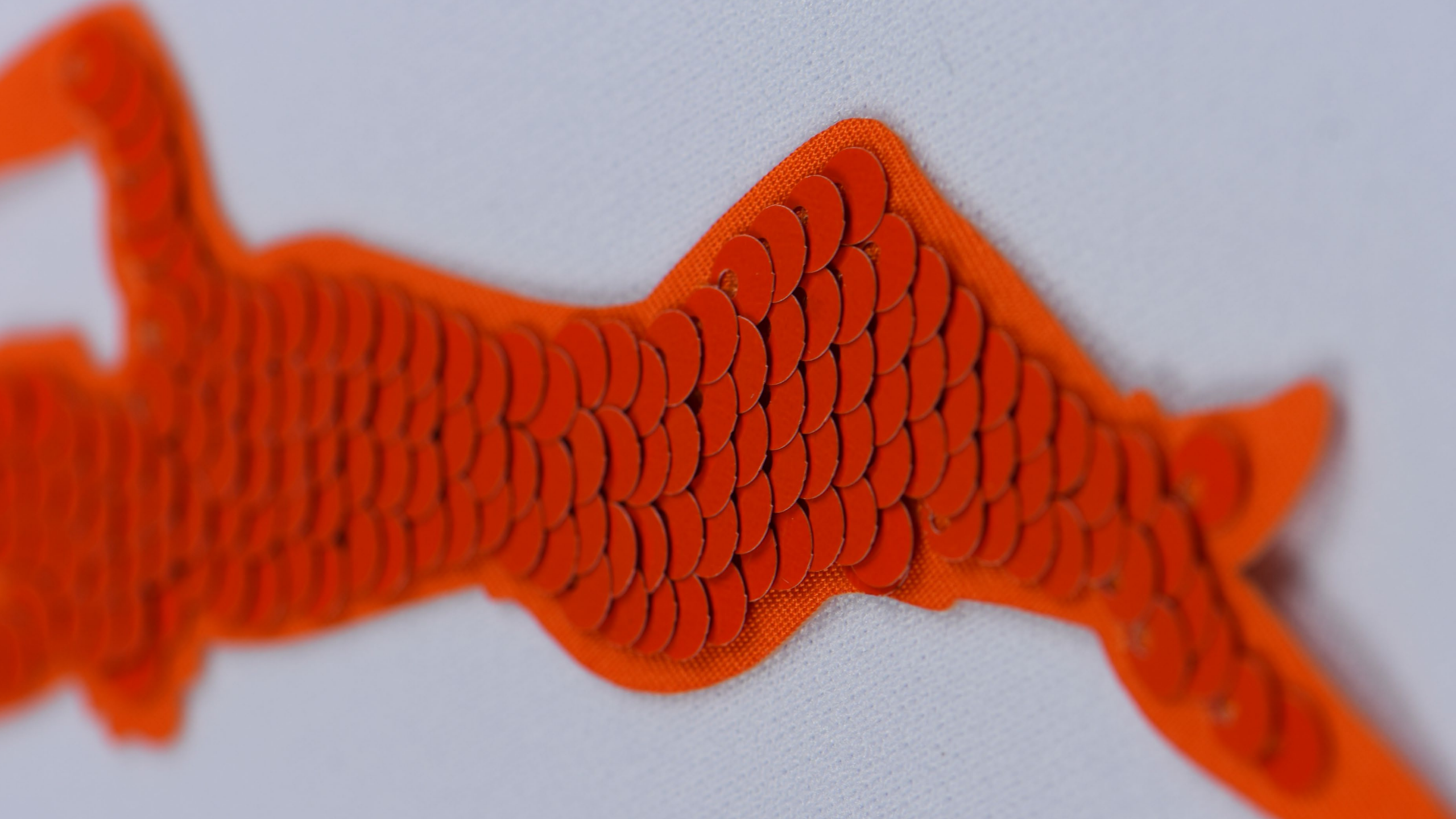
WASH TESTED

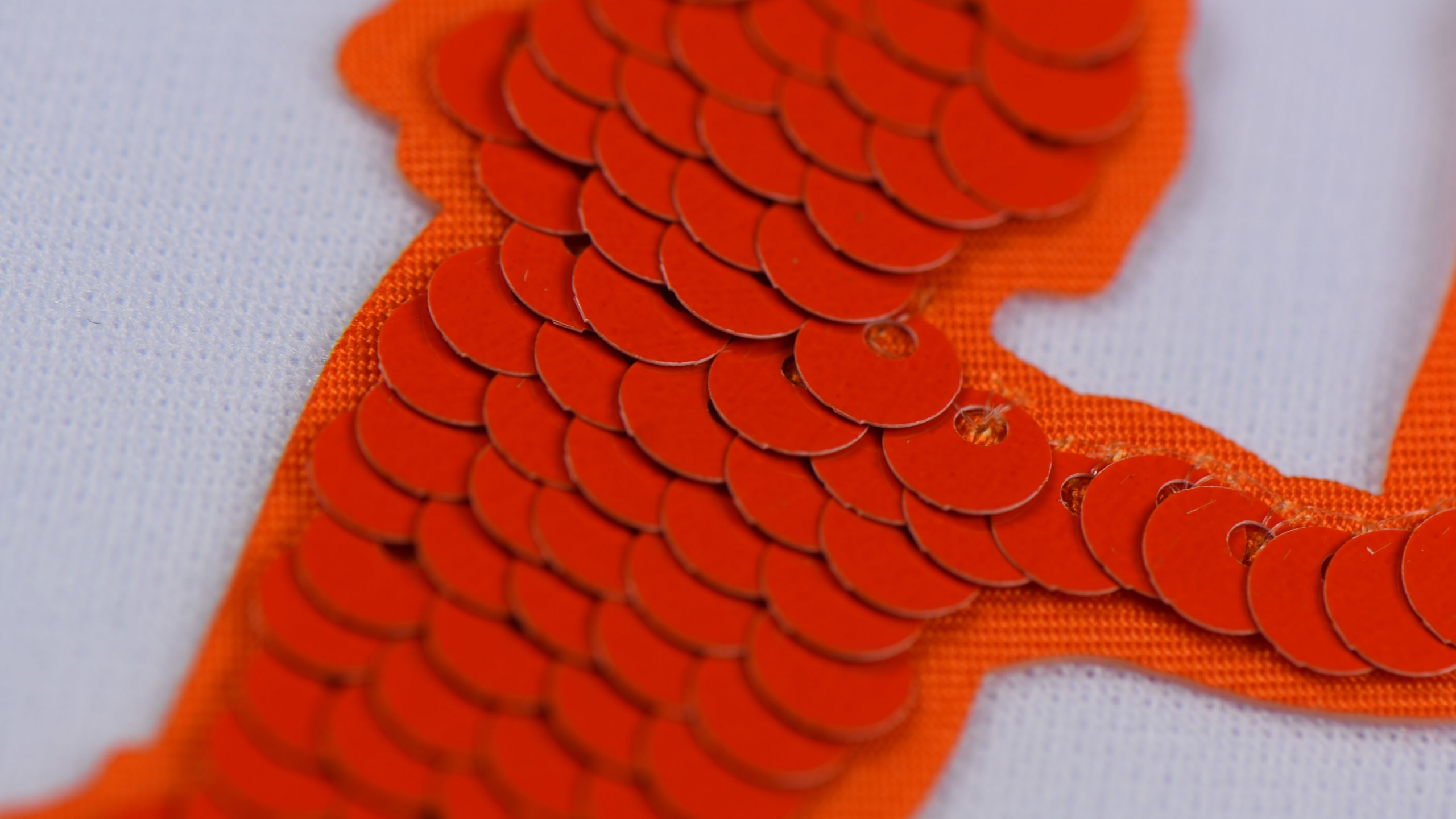


FROM RECYCLED MATERIAL











# LSU

## EMBROIDERY ON PRINTED TWILL

---

Embroidered felt is elevated to a premium look by using metallic thread and a custom stitch pattern. Lion offers a library of stitch patterns for you to choose from or can create custom stitching exclusive to you.

## DESIGN GUIDELINES

---

### 2201N1625051

- Please see the Lion Stitch Library for a variety of motif stitch options that are available.
- Nine thread color maximum.



PMS MATCHABLE MATERIAL



WASH TESTED



FROM RECYCLED MATERIAL



LSU  
TIGERS

LSU  
LIBERTY





# RITZ CARLTON

## EMBROIDERY AND FILM ON TWILL

A collection of tonal white stitch patterns on poly twill is slightly obscured by our semitransparent iridescent film, allowing the texture of the embroidery to show through.

### DESIGN GUIDELINES

#### 2102N1625071

- Foil is available in a limited color pallet. Digital material color cards are available upon request.
- Foil must be top layer.
- Please note, foil cap will acquire a similar surface texture to the material it is applied to.
- Please see the Lion Stitch Library for a variety of motif stitch options that are available.
- Nine thread color maximum



WASH TESTED



FROM RECYCLED MATERIAL

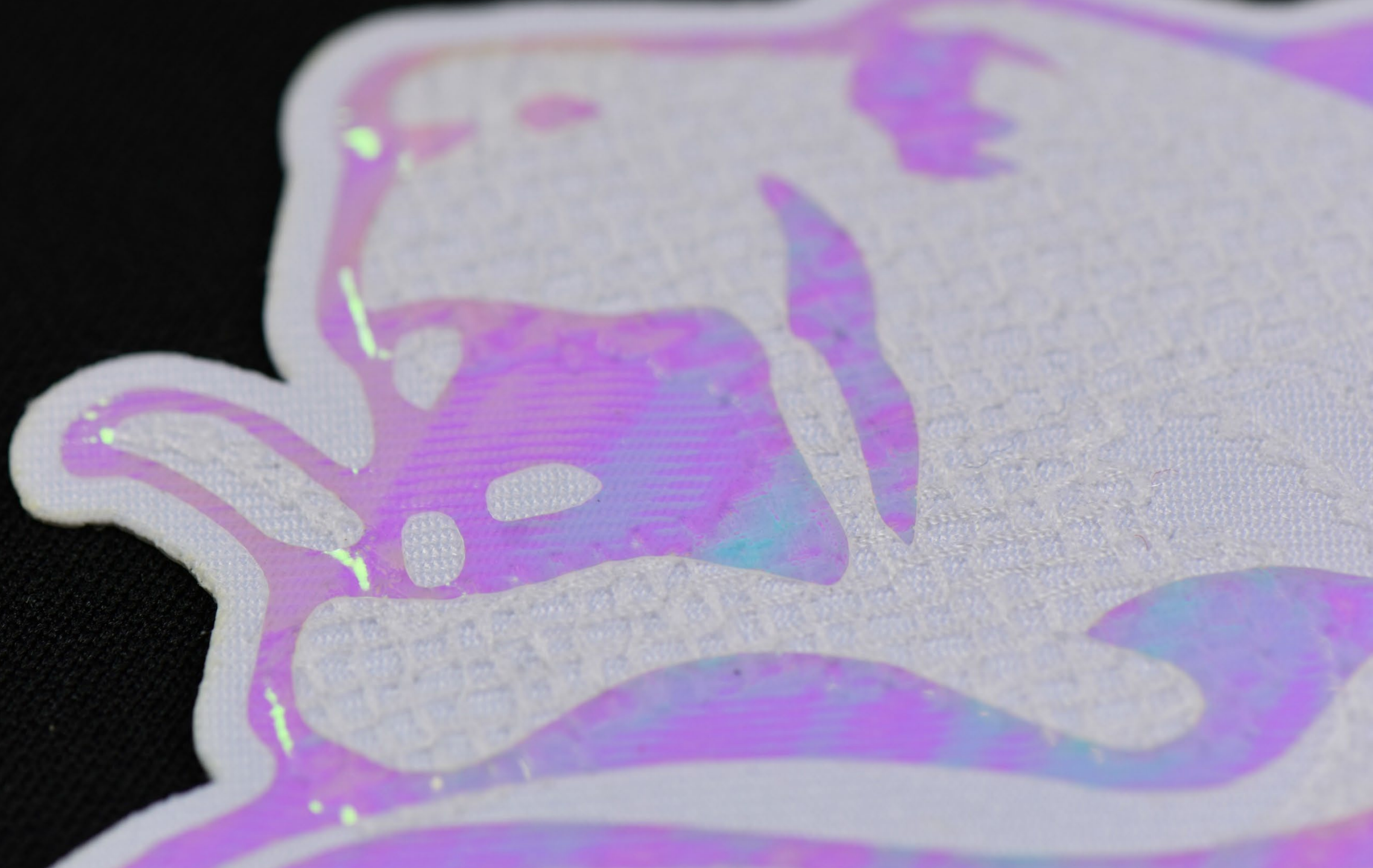


LOW WATER USAGE













# TENNESSEE TITANS

## EMBROIDERY ON INFUSION VELVET

---

The soft texture and vibrant colors of Infused velvet is a perfect material to juxtapose against metallic stitching. The embroidery has been kept light to serve more as an accent and to be cost effective.

## DESIGN GUIDELINES

---

### 2201N1625087

- Color matching on Infusion printed velvet can be subjective due to the surface texture and thickness.



INFUSION

PMS MATCHABLE  
MATERIAL

WASH TESTED

COMPLETELY  
RECYCLABLE









## ALFA ROMEO

### PRINTED SHEER ON PRINTED GLITTER TWILL

This design is two layers of printed fabric. The bottom layer is a silver glitter twill that gives any printed design a touch of sparkle, while the top layer is sublimated, laser perforated sheer material.

### DESIGN GUIDELINES

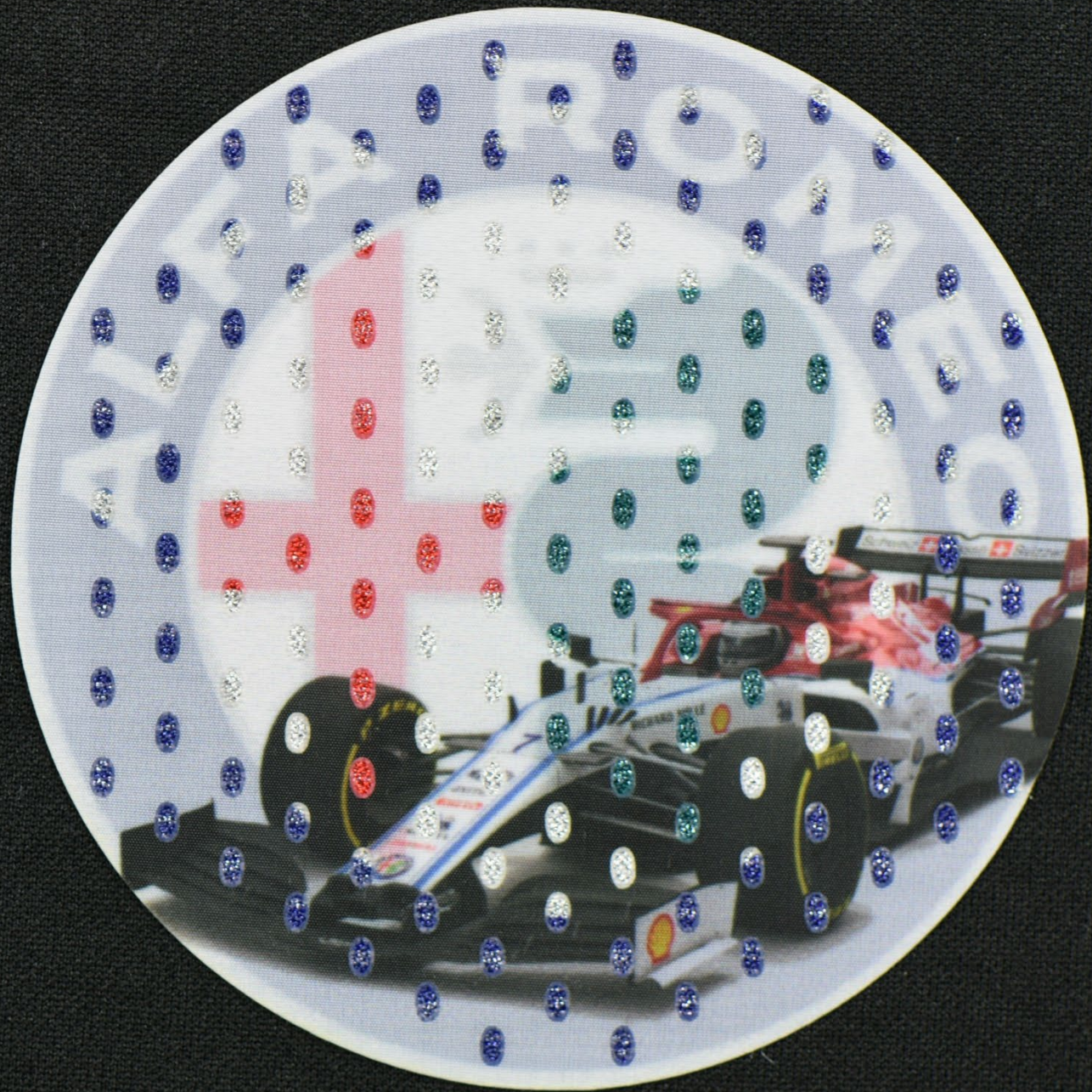
#### 4302N1625065

- The raw edge of Reverse Glitter Twill can slightly fray after washing. Capping or embroidering the edge is recommended if fraying is unacceptable.
- Sublimated Glitter Twill is not color matchable and should be designed with muted tones to achieve best results.

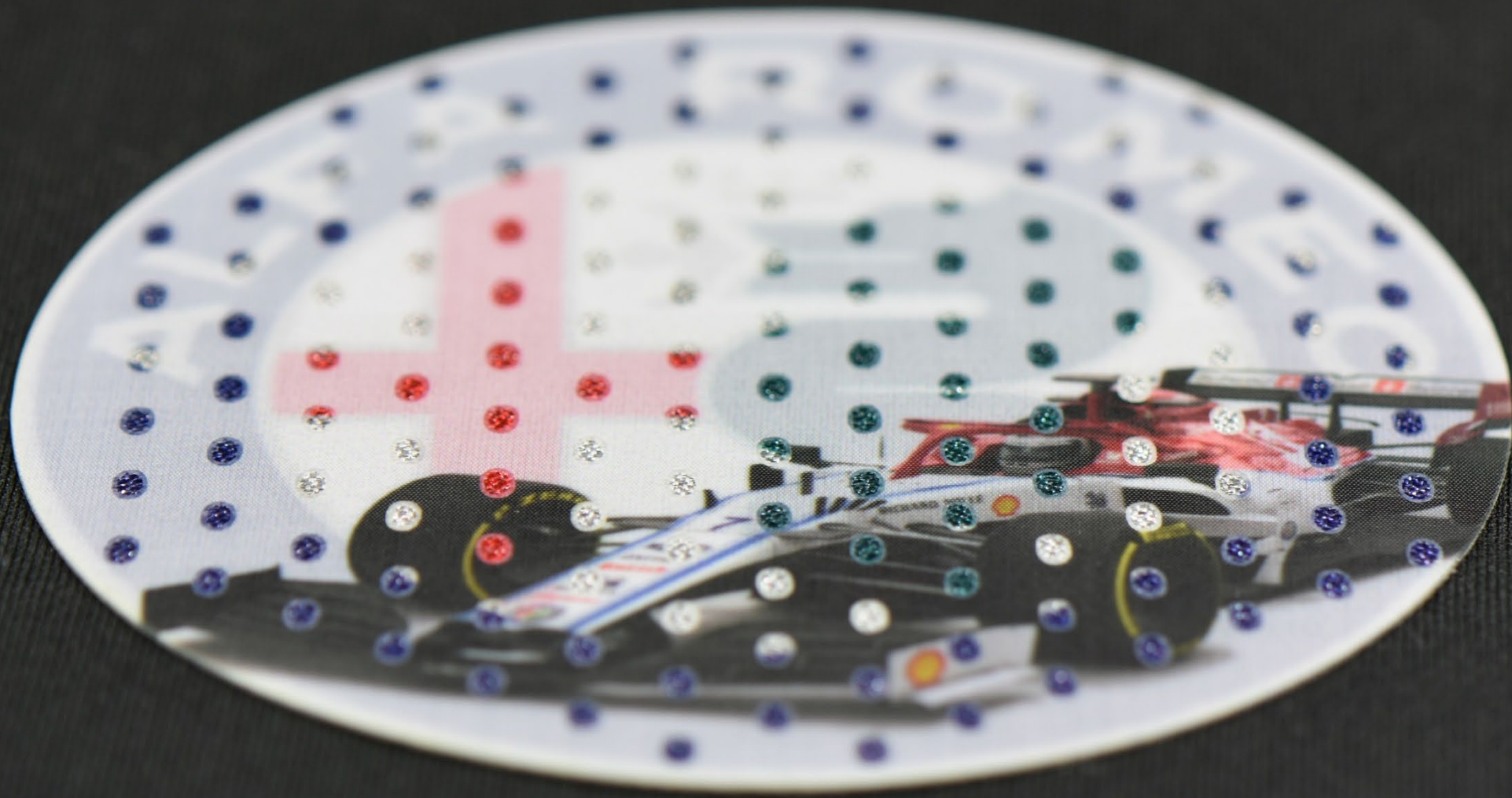
30°c  
x5

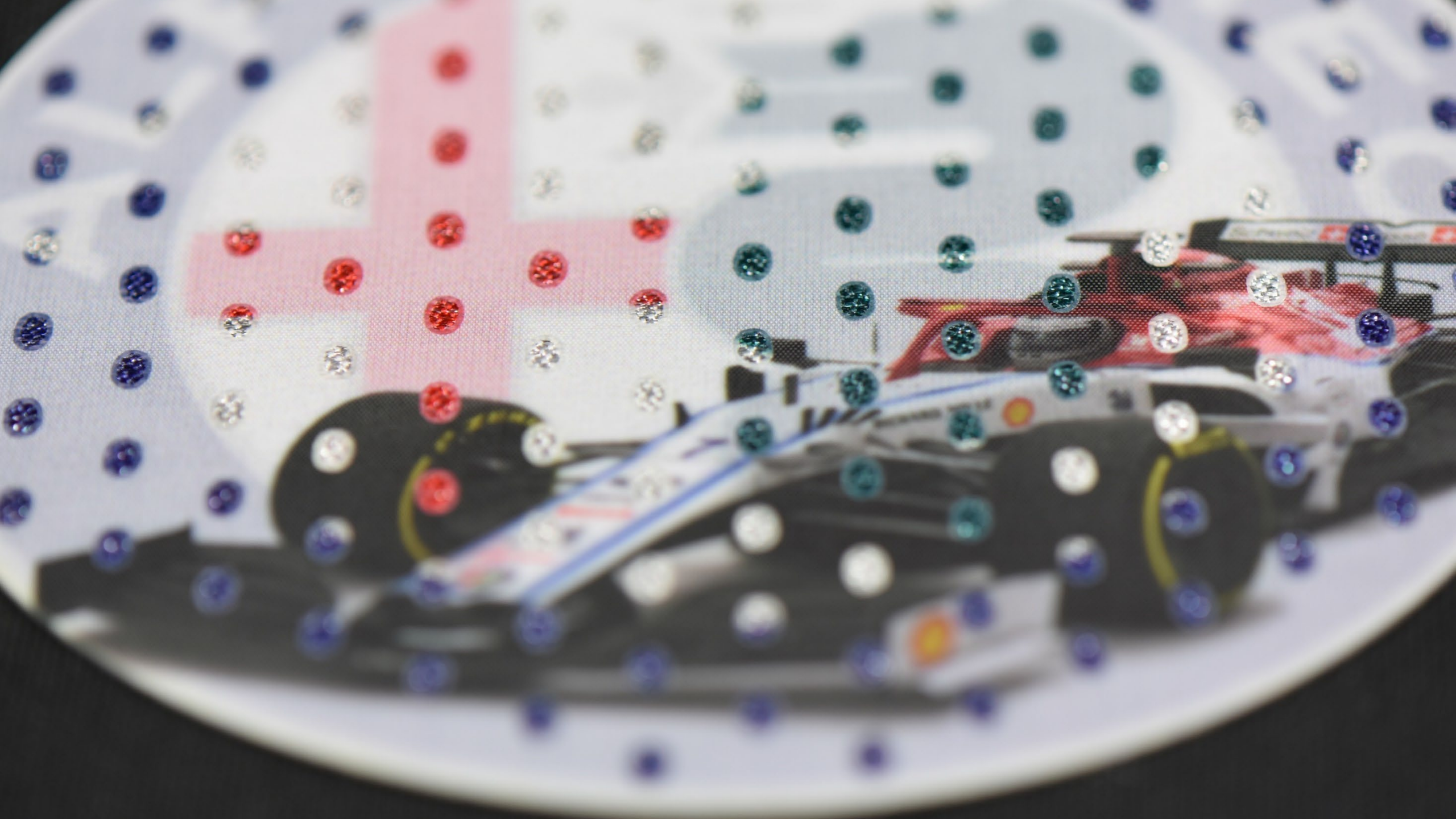
WASH TESTED

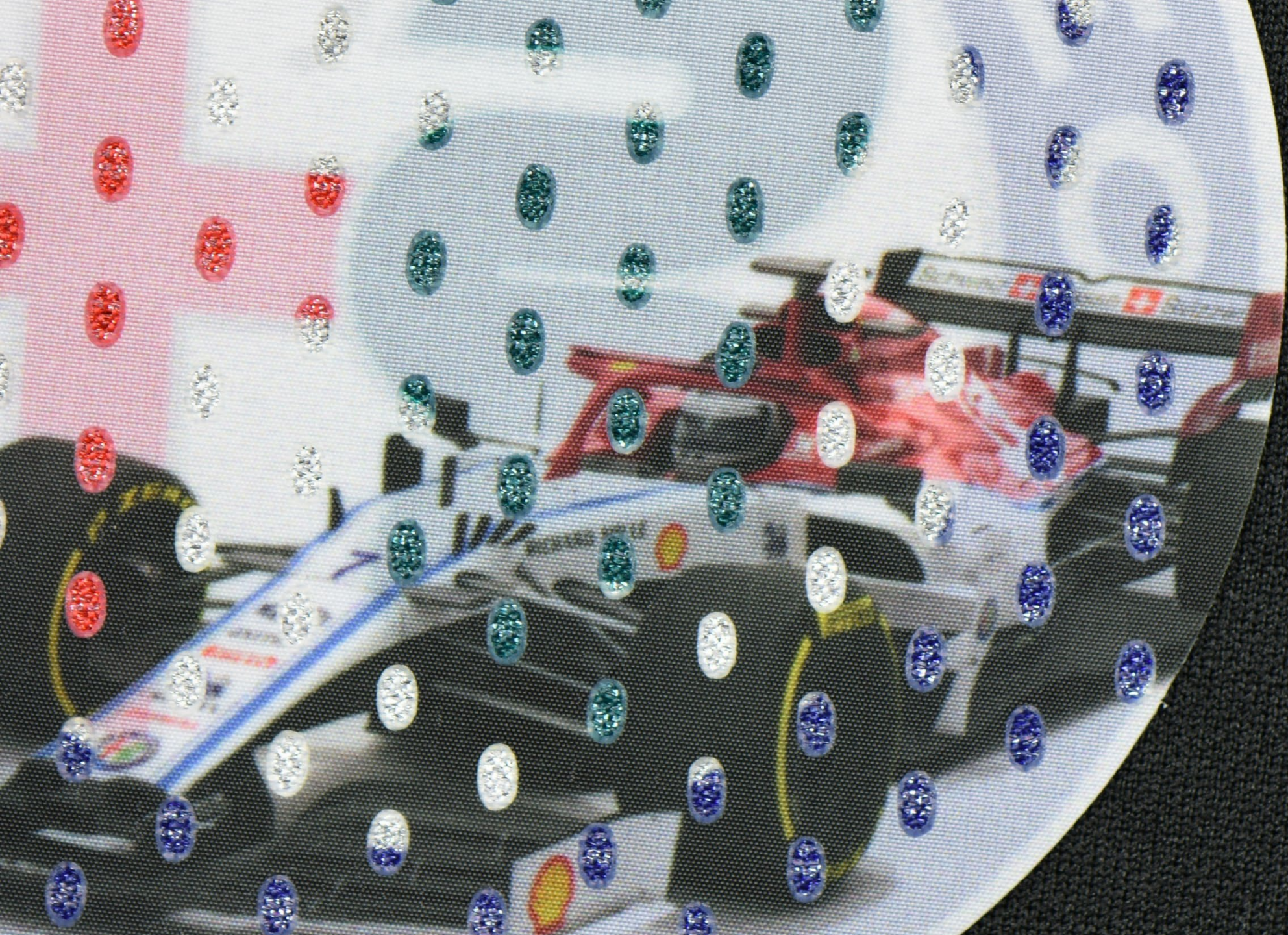












## TEXAS TECH

### RAINBOW REFLECTIVE ON STEP CLOTH

---

The top layer of this design is Lion's rainbow reflective material that really must be seen under a camera flash to be appreciated. After being exposed to a flash, a whole spectrum of hidden colors is revealed.

### DESIGN GUIDELINES

---

#### 42021N1625048

- Reflective material is available in a limited color pallet. Digital material color card available upon request.

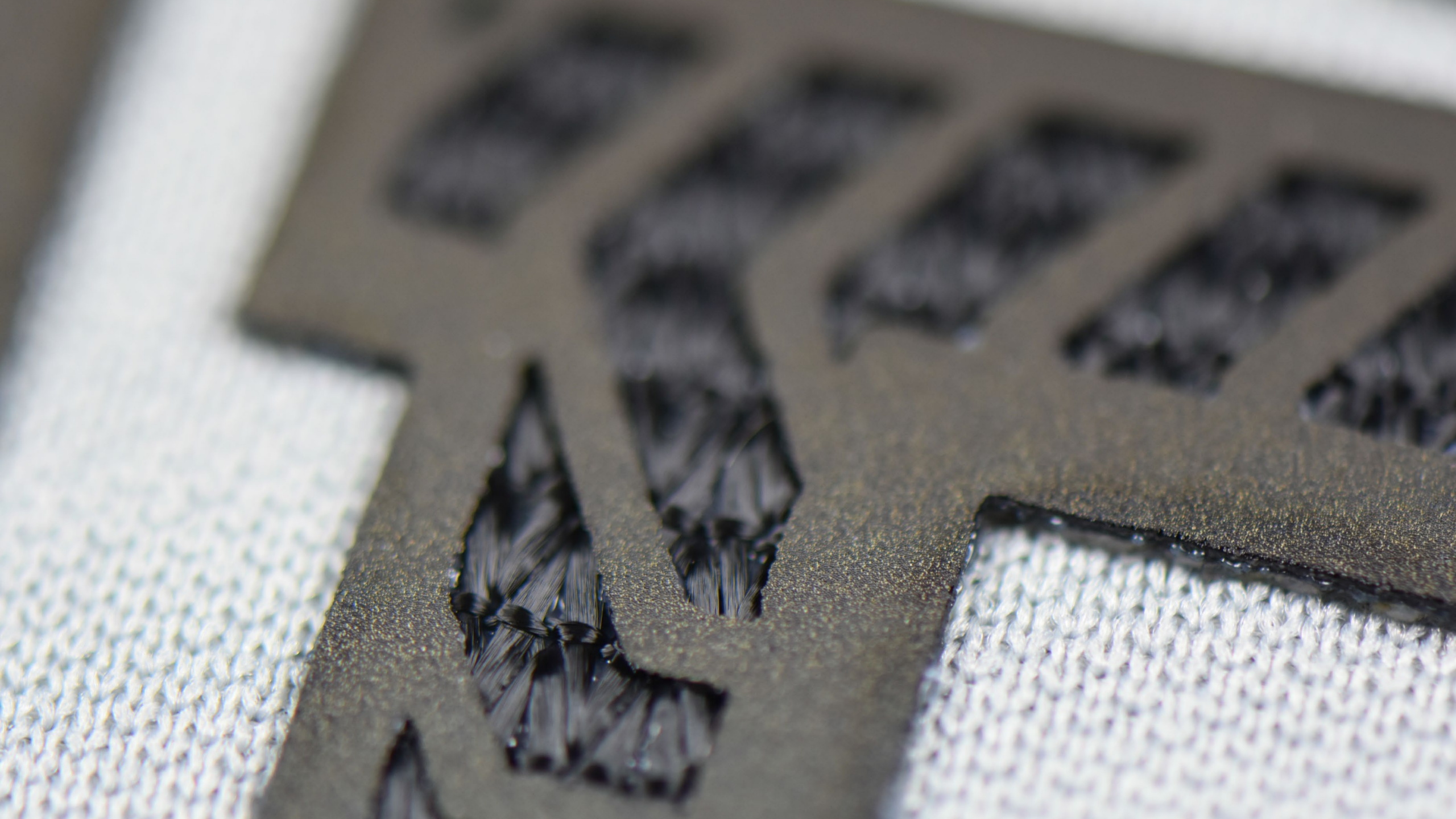


TEXAS

TECH

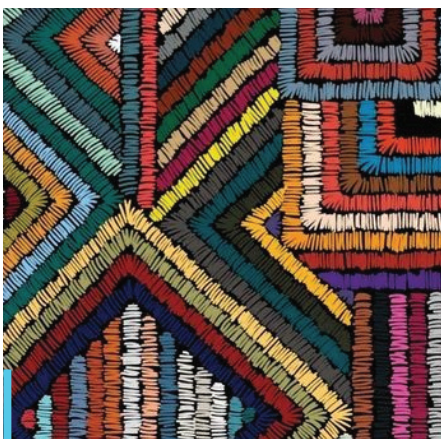








# FRESH



Combining multicolor embroidery threads with geometric patterns.



Using bright accents in dense, bold stitch patterns.



Oversize, '90s go big or go home throwback designs.



Mesh fabrics and textures add an active element.

## COCO

### EMBROIDERY ON TWILL

---

To bring a bit of texture and an updated look to an otherwise classic embroidered patch, Lion's micro chain stitching is a perfect choice.

### DESIGN GUIDELINES

---

#### 1000N1625067

- Please see the Lion Stitch Library for a variety of motif stitch options that are available.
- Nine thread color maximum.



PMS MATCHABLE  
MATERIAL



WASH TESTED



COMPLETELY  
RECYCLABLE



100%  
FROM RECYCLED  
POLYESTER









# NINJA

## EMBROIDERY ON STEP CLOTH

Featured here is collection of different stitch patterns used to create maximum texture. The design contains an element of craft stitching while still feeling very contemporary.

## DESIGN GUIDELINES

### 1000N1625060

- Sublimation on step cloth is color matchable.
- Step cloth can be a single layer, though subtle fraying can occur. Capping alleviates this potential.
- Please see the Lion Stitch Library for a variety of motif stitch options that are available.
- Nine thread color maximum.



PMS MATCHABLE MATERIAL



WASH TESTED



COMPLETELY RECYCLABLE



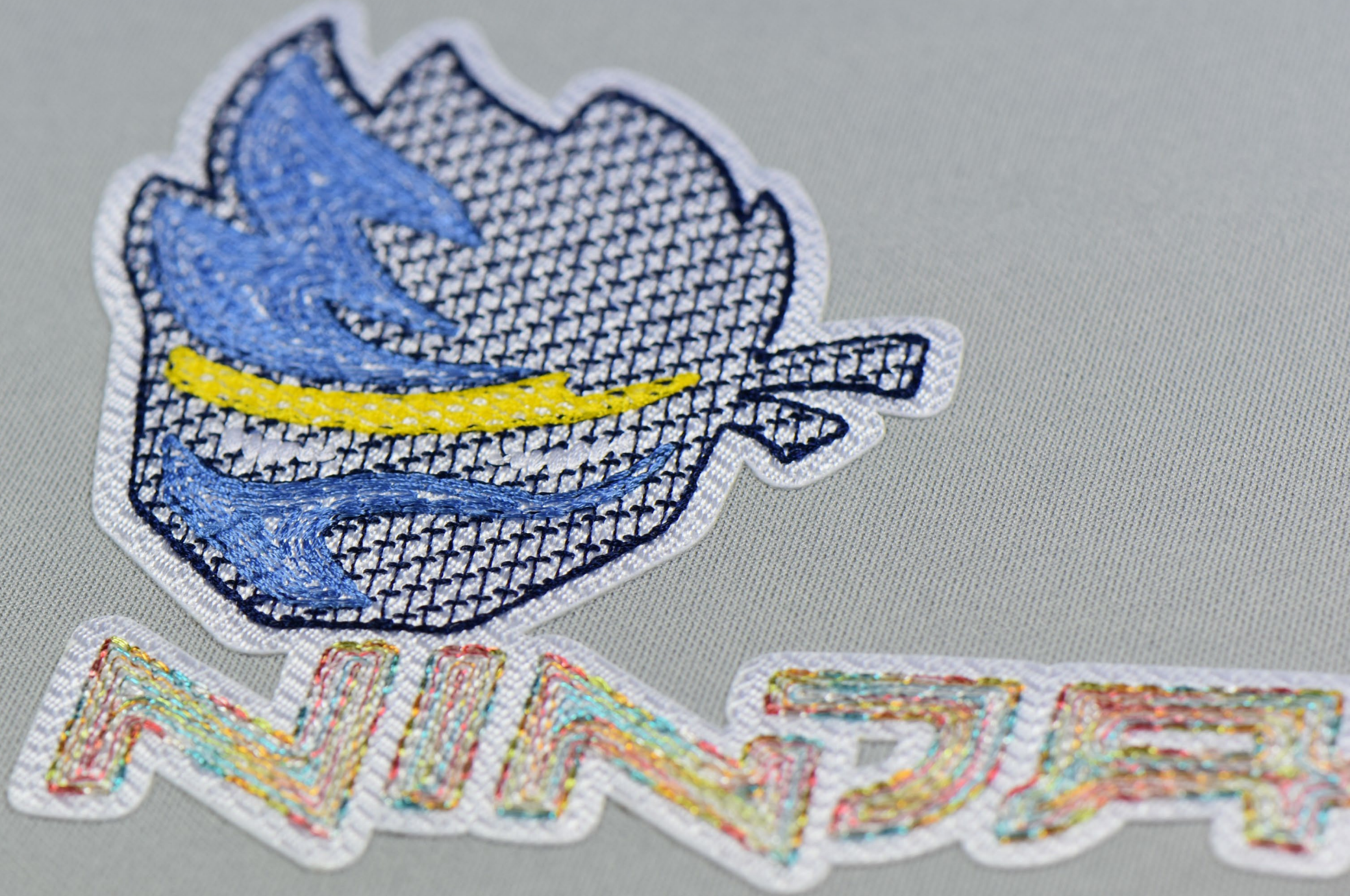
100% FROM RECYCLED POLYESTER



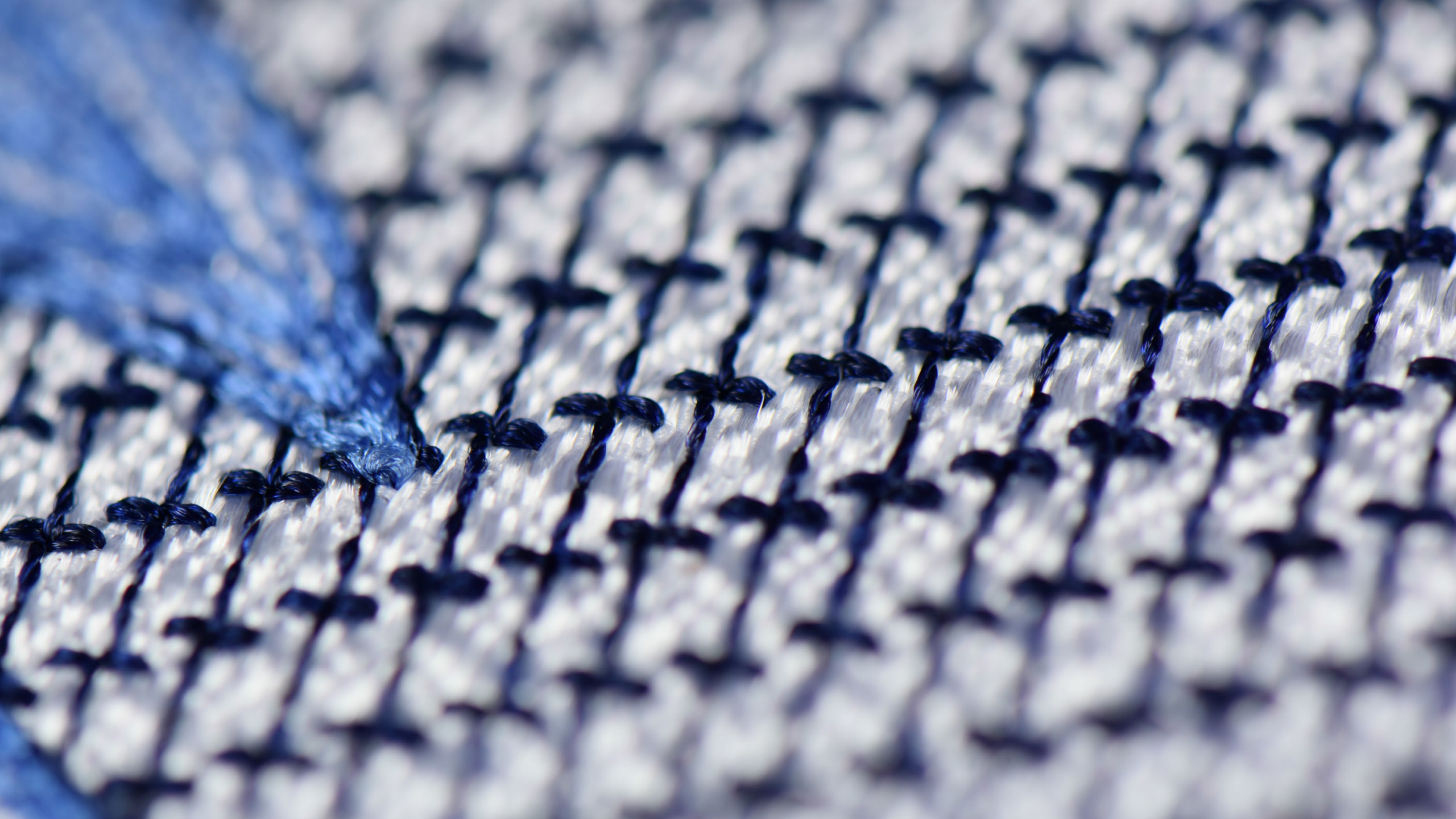


NIINQA









## BALTIMORE RAVENS

### EMBROIDERY ON POLY PRO

---

Seen here is the effective utilization of negative space in a logo as well as a unique surface quality brought on by tonal craft stitching.

### DESIGN GUIDELINES

---

#### 1000N1625088

- Please see the Lion Stitch Library for a variety of motif stitch options that are available.
- Nine thread color maximum.



PMS MATCHABLE  
MATERIAL



WASH TESTED



COMPLETELY  
RECYCLABLE



100%  
FROM RECYCLED  
POLYESTER













## BURTON

### EMBROIDERY ON FELT

---

By keeping the stitching in this design open and light, you can create the look of multiple layers of fabric while keeping the overall design to a single layer.

### DESIGN GUIDELINES

---

#### 1000N1625015

- Please see the Lion Stitch Library for a variety of motif stitch options that are available.
- Nine thread color maximum.



PMS MATCHABLE  
MATERIAL



WASH TESTED



COMPLETELY  
RECYCLABLE

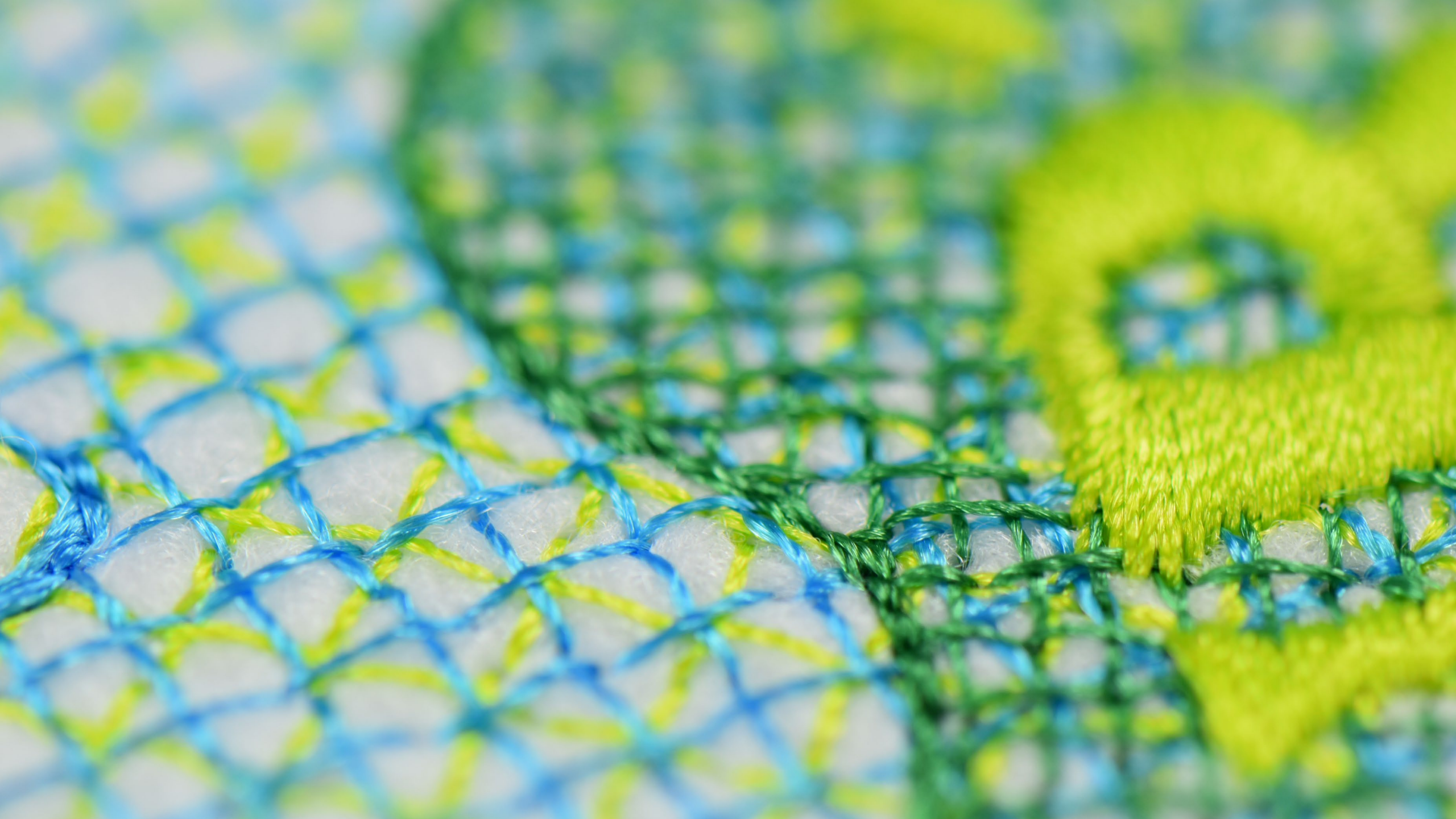


FROM RECYCLED  
POLYESTER









## ALABAMA CRIMSON TIDE EMBROIDERY ON PRINTED POLY PRO

This piece features a specialty zigzag stitch overtop of a printed poly twill with a striated pattern.

### DESIGN GUIDELINES

#### 2201N1625039

- Please see the Lion Stitch Library for a variety of motif stitch options that are available.
- Nine thread color maximum.



PMS MATCHABLE  
MATERIAL



WASH TESTED  
60°C  
x10



COMPLETELY  
RECYCLABLE



100%  
FROM RECYCLED  
POLYESTER

ROLL  
TIDE  
ROLL

A®

PHOTOGRAPHY







# FUBU

## EMBROIDERY ON TWILL, SATIN, AND MESH

Silver mesh and a custom edge stitch in neon pink collide for an updated athletic aesthetic.

## DESIGN GUIDELINES

### 2302N1625013

- Please see the Lion Stitch Library for a variety of motif stitch options that are available.
- Nine thread color maximum.



PMS MATCHABLE  
MATERIAL



WASH TESTED



COMPLETELY  
RECYCLABLE



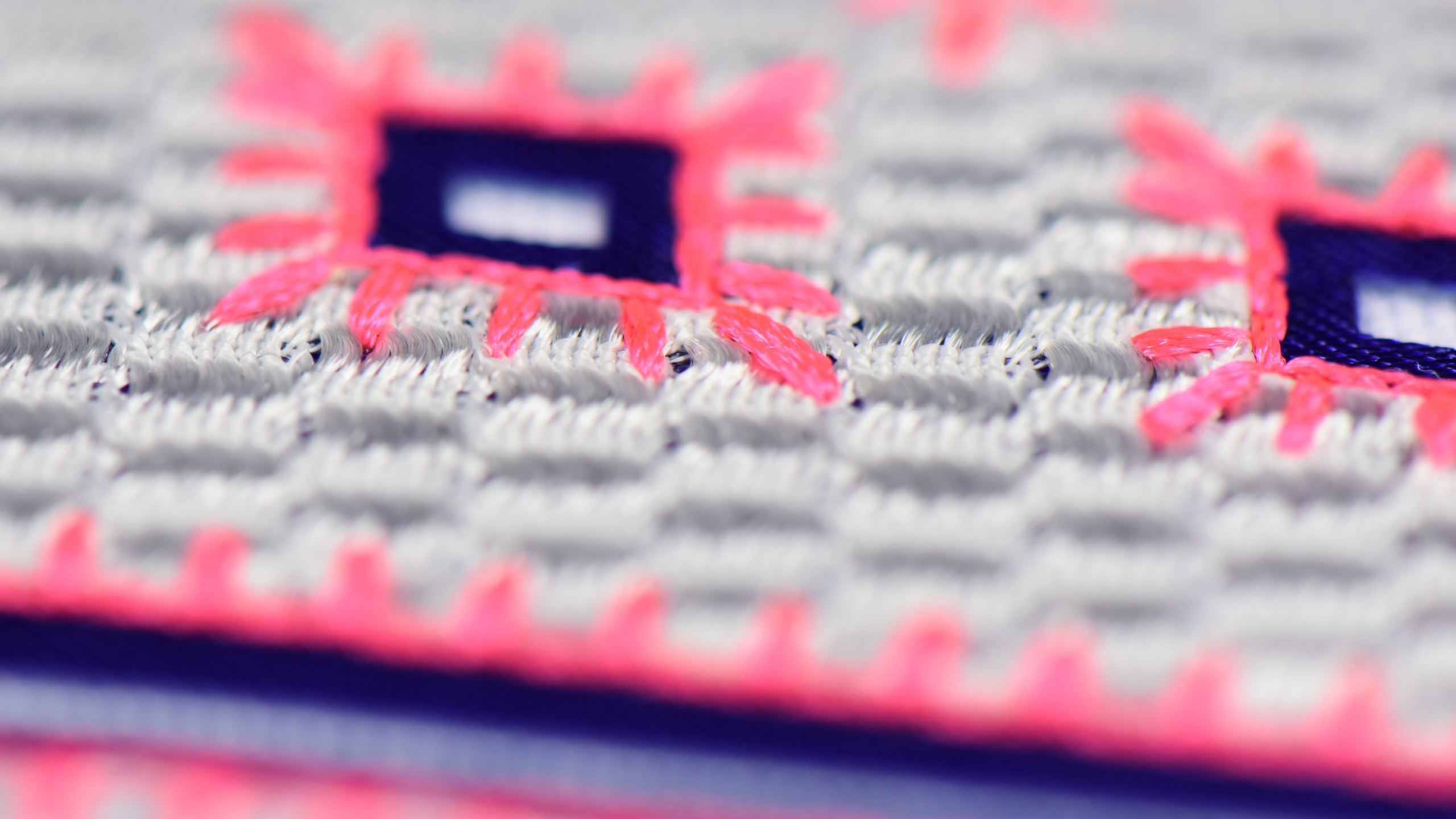
100%  
FROM RECYCLED  
POLYESTER

FURRY

The image displays the word "FURRY" in a stylized, blocky font. Each letter is filled with a repeating pattern of small, dark, textured shapes, possibly representing fur or a similar material. The letters are outlined in a vibrant red thread. This entire design is set against a solid, dark blue background. The embroidery is mounted on a light-colored, textured fabric surface.







# DENVER NUGGETS

## PRINTED MESH WITH SUEDE

Combining aesthetics and functionality, this design is actually two parts. The first being the central emblem, and the second is an embroidery file included with your purchase that is both part of the emblems design but also extends past the border of the emblem and onto the garment as a direct embroidery element.

### DESIGN GUIDELINES

#### 4201N1625009

- Standard tolerances apply.
- Not currently available for in store customization.



INFUSION

PMS MATCHABLE  
MATERIALWASH TESTED  
60°C  
x10COMPLETELY  
RECYCLABLE100%  
FROM RECYCLED  
POLYESTER











# CHAMPION

## CHENILLE ON FELT

---

Distressed looks bring a vintage flare to a piece that creates the feeling of timeless value. Distressed chenille and a ragged lasercut edge are natural fits for this aesthetic.

## DESIGN GUIDELINES

---

### 7100N1625059

- Please refer to Lion's Chenille Design Guide for additional information.
- Chenille thread can be color matched.
- Not currently available for in store customization.



PMS MATCHABLE  
MATERIAL



WASH TESTED



COMPLETELY  
RECYCLABLE



100%  
FROM RECYCLED  
POLYESTER



GRANDPARENTS

A row of ten white fabric letters, each with a scalloped edge and a decorative blue floral embroidery pattern. The letters are arranged in a slightly curved line and spell out the word "GRANDPARENTS". The embroidery is a dense, repeating floral motif in a vibrant blue color. The letters are set against a plain, light-colored fabric background.









# SPITFIRE

## CHENILLE ON PRINTED SUEDE

This design features printed suede and chenille with tufts of chenille thread purposefully missing to create a worn in appearance.

### DESIGN GUIDELINES

#### 7200N1625062

- Please refer to Lion's Chenille Design Guide for additional information.
- Chenille thread can be color matched.
- Not available for in store customization.



INFUSION

PMS MATCHABLE  
MATERIAL

WASH TESTED

COMPLETELY  
RECYCLABLE100%  
FROM RECYCLED  
POLYESTER









# UCLA

## PRINTED FELT WITH MESH APPLIQUÉ

---

Seen here is a bold 3D pattern printed on felt with a mesh appliqué as the second layer. Both materials are a perfect choice for matching any team's specific PMS colors.

### DESIGN GUIDELINES

---

**4202N1625043**

- Standard tolerances apply.



PMS MATCHABLE  
MATERIAL



WASH TESTED



COMPLETELY  
RECYCLABLE



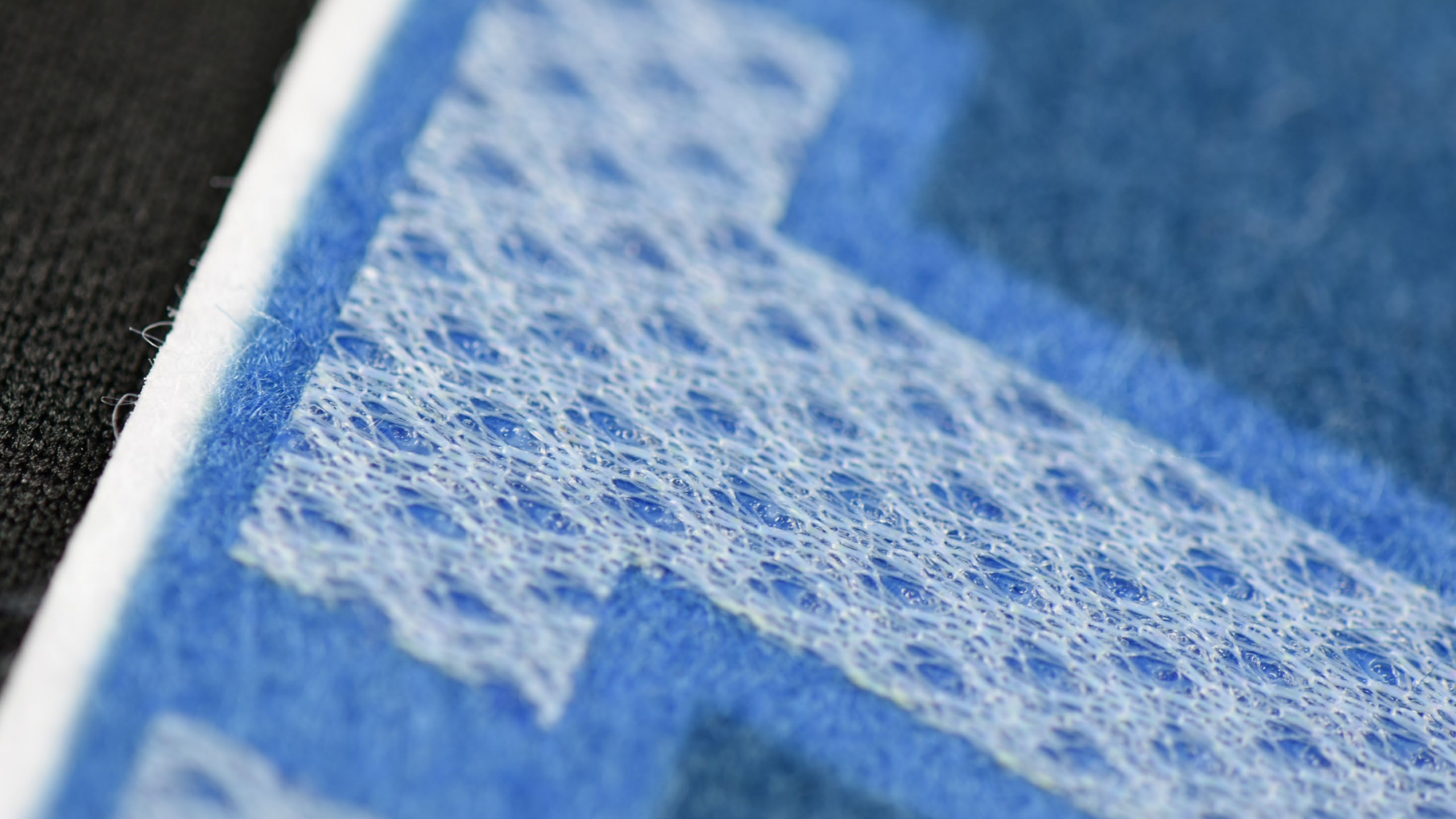
FROM RECYCLED  
POLYESTER

UCLA



UNIVERSITY





# UNIVERSITY OF MARYLAND

## FELT WITH PRINTED MESH AND EMBROIDERY

This design is a good example of how different a material can look with the intelligent application of embroidery as seen here in our mesh material, both stand alone and with a custom stitched edge.

### DESIGN GUIDELINES

#### 2202N1625041

- Standard tolerances apply.
- Design elements must be a minimum of one millimeter thick for proper adhesion.



PMS MATCHABLE MATERIAL



WASH TESTED



COMPLETELY RECYCLABLE



100% FROM RECYCLED POLYESTER



UNIVERSITY OF

MARYLAND

*Tempo*



ESTABLISHED 1856



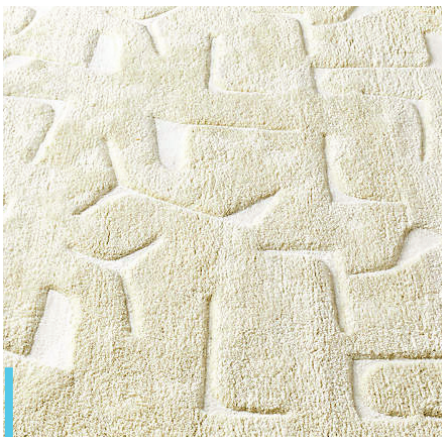
UNIVERSITY OF MARYLAND  
FOUNDED 1856



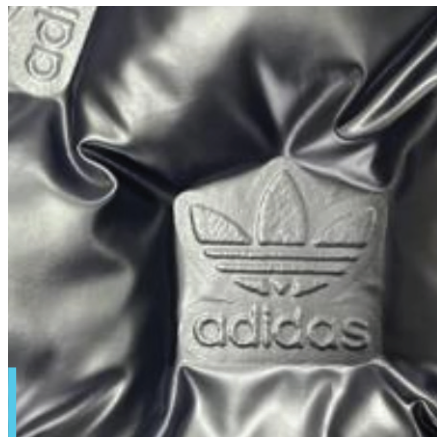




# POSH



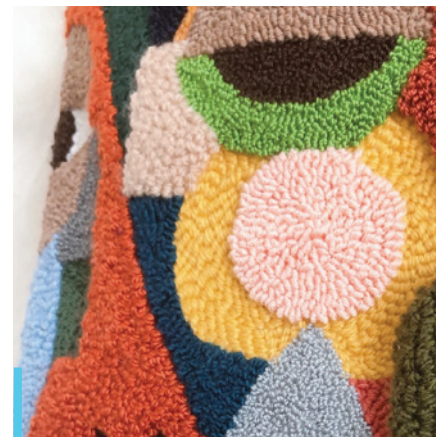
Tonal textures create unique and subtle designs.



Pillowed and lofted materials add airiness without weight.



Shaggy, abstracted chenille in offbeat colorways.



Playing with pile heights creates dimensional texture.

## NBA

### TONAL FELT AND VELVET

---

The same build featured in two different color ways. Tonal velvets and felts are matched to create a slightly raised look with luxurious hand feel.

### DESIGN GUIDELINES

---

#### 4102N1625026 & 4202N1625027

- Standard tolerances apply.
- Design elements must be a minimum of one millimeter thick for proper adhesion.



INFUSION

PMS MATCHABLE  
MATERIAL

WASH TESTED

COMPLETELY  
RECYCLABLE100%  
FROM RECYCLED  
POLYESTER

ALBABA



SNIBBA



# SNOOP DOGG

## TONAL SUEDE, STEP CLOTH, AND LEATHER

Another collection of tonal materials combined for a premium look including, suede, step cloth, and faux leather.

### DESIGN GUIDELINES

#### 4103N1625061

- Faux leather is available in a limited color pallet. Digital material color card available upon request.
- Sublimation on step cloth is color matchable.
- Step cloth can be a single layer, though subtle fraying can occur. Capping alleviates this potential.



PMS MATCHABLE  
MATERIAL



WASH TESTED



FROM RECYCLED  
MATERIAL



SNOOP DOGG









## SUPER DRY

### LAYERED FELT WITH VELVET

---

This design continues to explore the expansion of sewdown files. The stitching breaks the borders of the emblem with light, motif stitching to adds to the overall impact of the garment.

### DESIGN GUIDELINES

---

#### 4103N1625064

- Standard tolerances apply.
- Not currently available for in store customization.



WASH TESTED

FROM RECYCLED  
MATERIAL

Superdry. *Superdry.*

Superdry.®

極度乾燥(しなさい)



極度乾燥(しなさい)



Superdry

after

with







# ADIDAS

## DUAL HEIGHT TOOTHBRUSH STITCHING

---

A new offering for Lion this season is our dual height toothbrush stitching, seen here in multiple configurations.

### DESIGN GUIDELINES

---

#### 6101N1625020 & 6101N1625021

- The toothbrush embroidery effect requires embroidered areas to be at least 3mm wide.
- Please consult your merchandiser to discuss the design parameters of the design or designs that you are interested in.



PMS MATCHABLE  
MATERIAL



WASH TESTED  
60°C  
x10

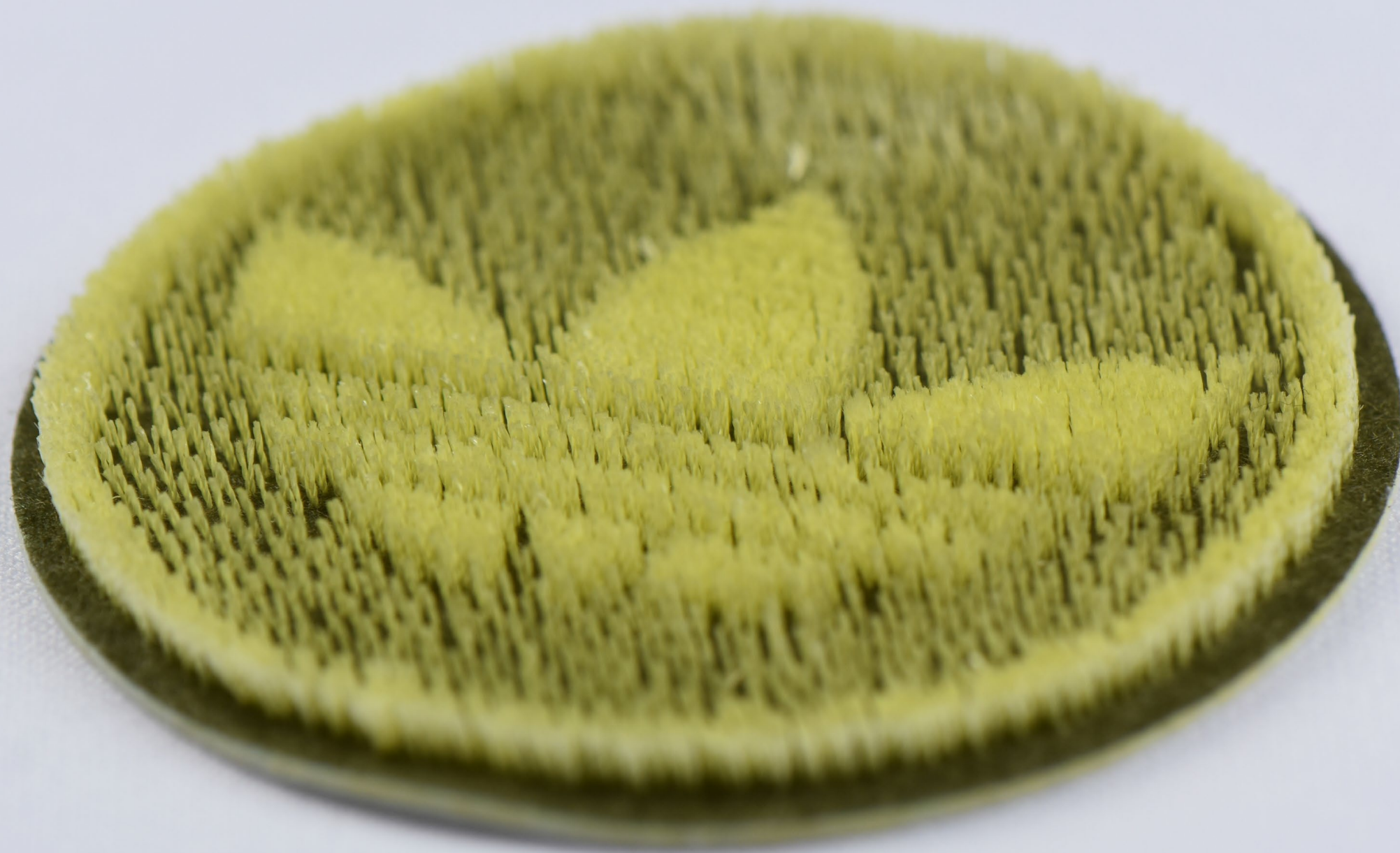


COMPLETELY  
RECYCLABLE

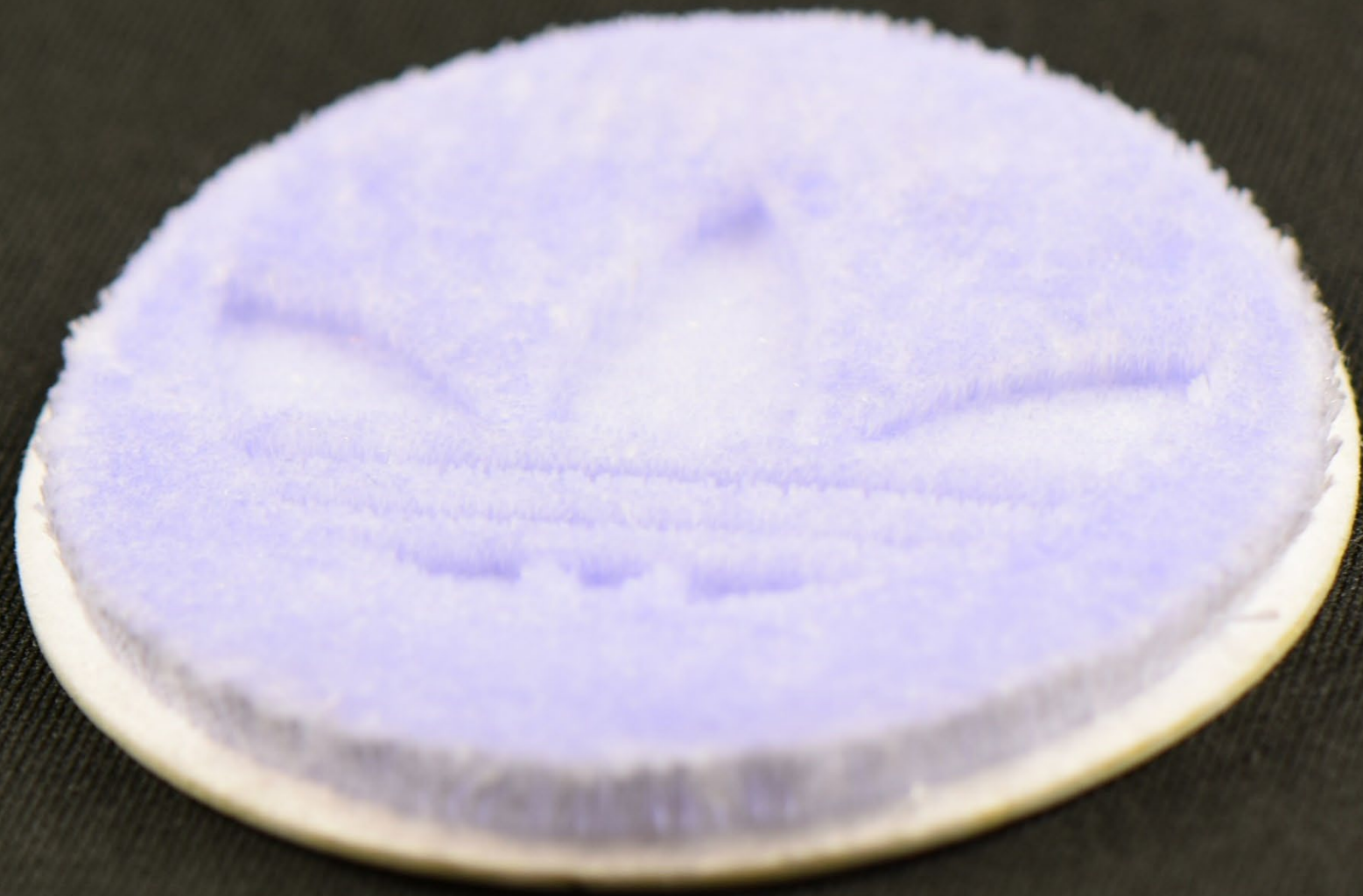


100%  
FROM RECYCLED  
POLYESTER









# PINK PANTHER

## METALLIC CHENILLE AND EMBROIDERY ON INFUSED FELT

Infused velvet is paired with a blended chenille mix of regular and metallic thread. This blend offers a softer hand feel than 100% metallic chenille while still maintaining plenty of shine.

## DESIGN GUIDELINES

### 7200N1625070

- Please refer to Lion's Chenille Design Guide for additional information.
- Three color maximum with a chenille color blend.
- Chenille thread can be color matched.



INFUSION



PMS MATCHABLE  
MATERIAL



60°C  
x10

WASH TESTED



100%  
COMPLETELY  
RECYCLABLE



100%  
FROM RECYCLED  
POLYESTER











# UNION

## CHENILLE ON INFUSED FELT

---

This concept showcases chenille with a slightly reduced density and embedded stitching in the central wordmark, all on printed felt.

## DESIGN GUIDELINES

---

### 7200N1625019

- Please refer to Lion's Chenille Design Guide for additional information.
- Three color maximum with a chenille color blend.
- Chenille thread can be color matched.



INFUSION



PMS MATCHABLE  
MATERIAL



WASH TESTED  
60°C  
x10



COMPLETELY  
RECYCLABLE



100%  
FROM RECYCLED  
POLYESTER

UNION

The image shows the word "UNION" embroidered in a stylized, blocky font. The letters are filled with a dense, textured orange-red thread, possibly a chenille or a similar heavy stitch. Each letter is outlined with a single, clean line of purple thread. The entire word is set against a plain, light blue background. The embroidery has a slightly raised, three-dimensional appearance.







# KANSAS STATE

## PILLOWING FOAM UNDER INFUSED VELVET

Lion's pillowing foam is featured here under a top layer of printed velvet. Foam is a perfect addition to create a rounded look with plenty of loft.

### DESIGN GUIDELINES

#### 7100N1625004

- Pillowing requires and minimum element dimension of 6mm and a satin applique stitch of 3mm.
- Not currently available for in store customization.
- Please consult your merchandiser to discuss the design parameters of the design or designs that you are interested in.



INFUSION



PMS MATCHABLE  
MATERIAL



60°C  
x10

WASH TESTED



>20%  
FROM RECYCLED  
MATERIAL













# JOHNNIE WALKER

## PILLOWING FOAM UNDER INFUSED VELVET

Another example of Lion's pillowing foam under printed velvet. This time paired with embroidery that sculpts the design into rounded areas.

### DESIGN GUIDELINES

#### 2323N1625069

- Pillowing requires a minimum element dimension of 6mm and a satin applique stitch of 3mm.
- Not currently available for in store customization.
- Please consult your merchandiser to discuss the design parameters of the design or designs that you are interested in.



INFUSION

PMS MATCHABLE  
MATERIAL

WASH TESTED

FROM RECYCLED  
MATERIAL











# ARKANSAS RAZORBACKS

## VELOCITY, EMBROIDERED TWILL, AND STEP CLOTH

The advantage of making everything custom is that we can show our customers different design builds, all at varying price points in order to find a look that is a perfect for you.

## DESIGN GUIDELINES

### TOON16250045, 1000N1625045, & 4203N1625045

- Please consult your merchandiser to discuss the design parameters of the design or designs that you are interested in.



PMS MATCHABLE  
MATERIAL



WASH TESTED



FROM RECYCLED  
MATERIAL



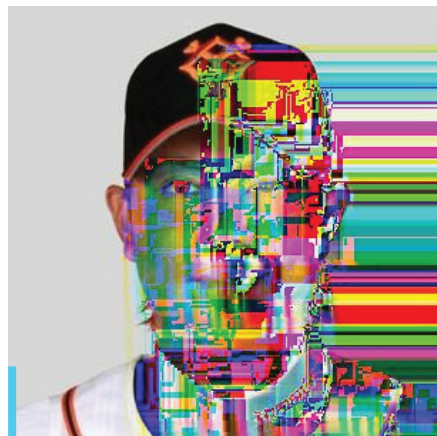




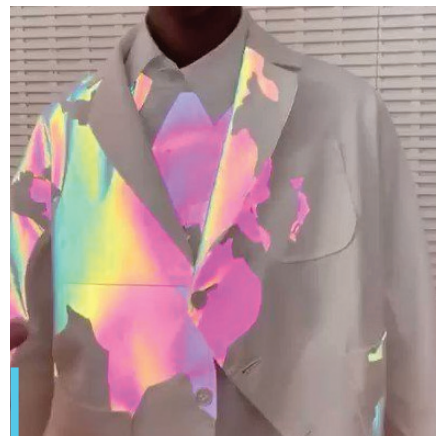
# META



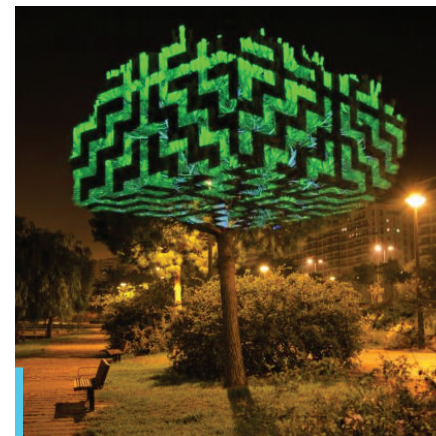
Designs blurring the line between craft and technology.



Graphic abstractions presented in high definition.



Infusing everyday designs with interactive elements.



Blending digital elements with the natural world.

# GEORGIA NATIONAL CHAMPIONS VELOCITY

Introducing Lion's new Velocity heat transfers! Featuring unlimited colors, photo real image quality, all at just in time order quantities. Proudly made in the USA at Lion's domestic production facility.

## DESIGN GUIDELINES

### TOON16250053

- Please consult your merchandiser to discuss the design parameters of the design or designs that you are interested in.



PMS MATCHABLE  
MATERIAL



WASH TESTED



SUSTAINABLE





20

®

21

NATIONAL

CHAMPIONS

2022  
INDY

#1 / 5000





20

21

**NATIONAL**

**CHAMPIONS**

**2022  
INDY**

#1 / 5000

# BORED APE YACHT CLUB

## VELOCITY

Velocity features the ability to print with such precision that micro text, barely visible to the eye, is available as either a design choice or an anti-piracy measure.

## DESIGN GUIDELINES

### TOON16250055

- Please consult your merchandiser to discuss the design parameters of the design or designs that you are interested in.



PMS MATCHABLE  
MATERIAL



WASH TESTED



SUSTAINABLE



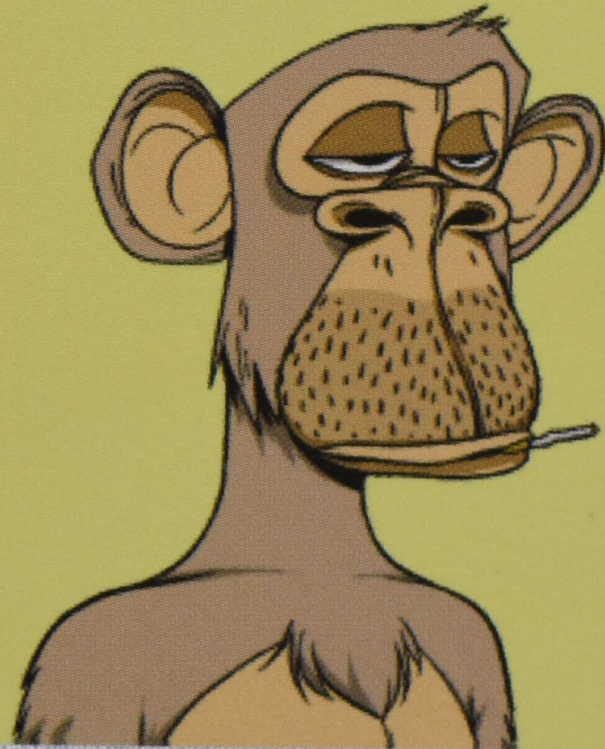


X



BOPPED APE YACHT CLUB #9110

0b000b00a7f477aa07c0061ca0110a18a000f13d



STYLIZED LOGO  
+  
SMALL SYMBOL



7647a8ab7c2061c29115a11ba200f149

# FAST FOOD COLLECTION

## PRINTED TWILL, VELOCITY, & EMBROIDERY

Seen here is a collection of different techniques including a single layer of printed twill, our new Velocity heat transfer, and a classic embroidered emblem.

### DESIGN GUIDELINES

**4201N1625082, T00N16520083, & 1000N1625084**

- Please consult your merchandiser to discuss the design parameters of the design or designs that you are interested in.



**4201N1625082 & 1000N1625084**



**T00N16520083**







McDonald's







TACO  
BELL

# QR CODE COLLECTION

## EMBROIDERY, SUBLIMATION, & VELOCITY

Get your message across with an emblem embedded with a QR code linking to your pre-loaded content. Available in multiple materials and mixed media.

### DESIGN GUIDELINES

3302N1625078, 4201N1625080, 4201N1625079, & TOON16250081

- Please consult your merchandiser to discuss the design parameters of the design or designs that you are interested in.

3302N1625078, 4201N1625080, & 4201N1625079



PMS MATCHABLE MATERIAL



WASH TESTED



SUSTAINABLE

TOON16250081

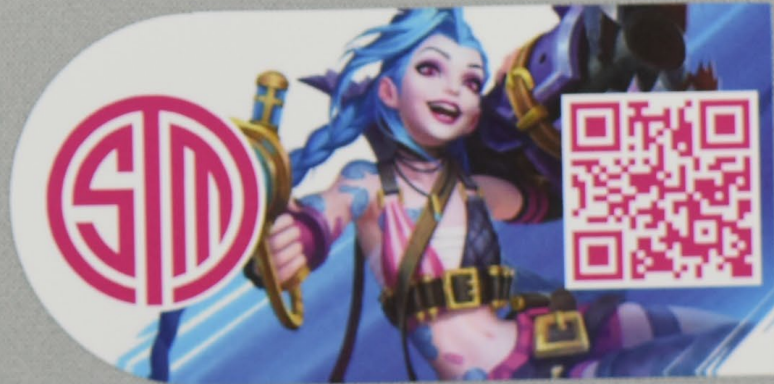


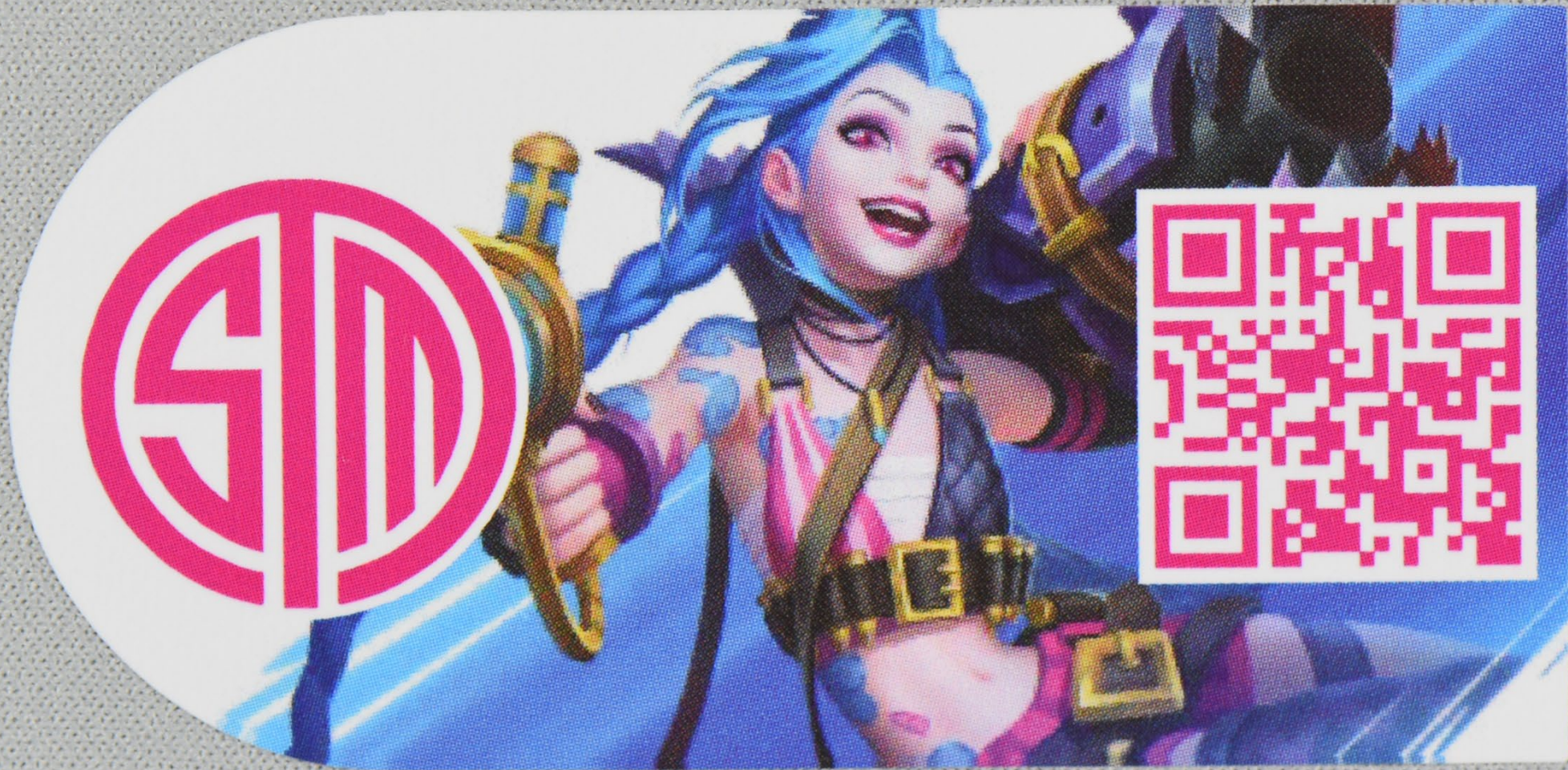
WASH TESTED





TEAM LIQUID







**CLOUD9**





TEAM LIQUID



同和



# NASCAR

## VELOCITY

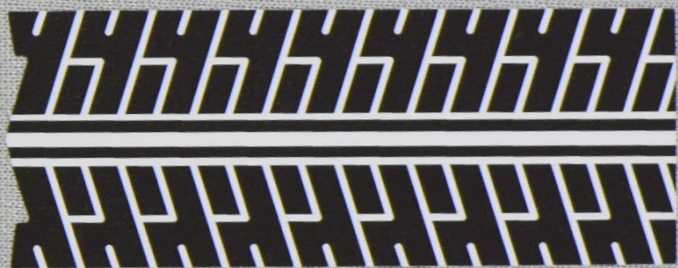
Velocity is also a perfect pairing with embedded QR codes that can be blended into a design as seen here within the tire tread pattern.

## DESIGN GUIDELINES

### TOON16250008

- Please consult your merchandiser to discuss the design parameters of the design or designs that you are interested in.





NISSAN



NISSAN





# TECHNICAL GLOSSARY

**NOTE: Lion Brothers' China factory is officially designated as a high-tech factory and is a zero waste, zero landfill facility with all waste stream materials being recycled.**

**NOTE: The Recycled Content column specifically refers to the content of the emblem itself, excluding heat seal backings. Sew down emblems directly correlate the Recycled Content column percentages.**

Title	MOQ	Recycled Content (%)	Sustainable	Low Water	Fully Recyclable	PMS Matching	Reactive	Wash Test	Application Method
Kenzo 1	Standard	100%	--	--	✓	✓	--	60°C-10x	Heat Seal/Sew Down
Kenzo 2	Standard	100%	--	--	✓	--	--	60°C-10x	Heat Seal/Sew Down
Fiorucci	Standard	100%	--	--	--	--	--	40°C-10x	Heat Seal/Sew Down
Baltimore Orioles	Standard	>20%	--	--	--	--	--	40°C-5x	Heat Seal/Sew Down
WNBA	Standard	>20%	--	--	--	--	--	40°C-5x	Heat Seal/Sew Down
LSU	Standard	>50%	--	--	--	✓	--	60°C-10x	Heat Seal/Sew Down
Ritz Carlton	Standard	>50%	--	✓	--	--	--	40°C-10x	Heat Seal/Sew Down
Tennessee Titans	Standard	--	--	--	✓	✓	--	60°C-10x	Heat Seal/Sew Down
Alfa Romeo	Standard	--	--	--	--	--	--	30°C-5x	Heat Seal/Sew Down
Texas Tech	Standard	--	--	--	--	--	✓	40°C-10x	Heat Seal/Sew Down
Coco	Standard	>50%	--	--	✓	✓	--	60°C-10x	Heat Seal/Sew Down
Seattle Kraken	Standard	>50%	--	--	✓	✓	--	60°C-10x	Heat Seal/Sew Down
Ninja	Standard	100%	--	--	✓	✓	--	60°C-10x	Heat Seal/Sew Down

Title	MOQ	Recycled Content (%)	Sustainable	Low Water	Fully Recyclable	PMS Matching	Reactive	Wash Test	Application Method
Baltimore Ravens	Standard	100%	--	--	✓	✓	--	60°C-10x	Heat Seal/Sew Down
Burton	Standard	100%	--	--	✓	✓	--	60°C-10x	Heat Seal/Sew Down
Alabama Crimson Tite	Standard	100%	--	--	✓	✓	--	60°C-10x	Heat Seal/Sew Down
Fubu	Standard	100%	--	--	✓	✓	--	60°C-10x	Heat Seal/Sew Down
Denver Nuggets	Standard	100%	--	--	✓	✓	--	60°C-10x	Heat Seal/Sew Down
Champion	Standard	100%	--	--	✓	✓	--	60°C-10x	Heat Seal/Sew Down
Spitfire	Standard	100%	--	--	✓	✓	--	60°C-10x	Heat Seal/Sew Down
University of Wisconsin	Standard	100%	--	--	✓	✓	--	60°C-10x	Heat Seal/Sew Down
UCLA	Standard	100%	--	--	✓	✓	--	60°C-10x	Heat Seal/Sew Down
University of Maryland	Standard	100%	--	--	✓	✓	--	60°C-10x	Heat Seal/Sew Down
NBA 1	Standard	100%	--	--	✓	✓	--	60°C-10x	Heat Seal/Sew Down
NBA 2	Standard	100%	--	--	✓	✓	--	60°C-10x	Heat Seal/Sew Down
Snoop Dogg	Standard	>50%	--	--	--	--	--	60°C-10x	Heat Seal/Sew Down
Super Dry	Standard	>50%	--	--	--	--	--	60°C-10x	Heat Seal/Sew Down
Adidas 1	500	100%	--	--	✓	✓	--	60°C-10x	Heat Seal/Sew Down
Adidas 2	500	100%	--	--	✓	✓	--	60°C-10x	Heat Seal/Sew Down
Baltimore Orioles	500	100%	--	--	✓	✓	--	60°C-10x	Heat Seal/Sew Down
Pink Panther	500	100%	--	--	✓	✓	--	60°C-10x	Heat Seal/Sew Down
Union	500	100%	--	--	✓	✓	--	60°C-10x	Heat Seal/Sew Down
Philadelphia Flyers	500	100%	--	--	✓	✓	--	60°C-10x	Heat Seal/Sew Down
Kansas State	Standard	>20%	--	--	--	--	--	60°C-10x	Heat Seal/Sew Down
Johnnie Walker	Standard	>20%	--	--	--	--	--	60°C-10x	Heat Seal/Sew Down
Arkansas Razerbacks 1	Standard	>50%	--	--	--	✓	--	60°C-10x	Heat Seal/Sew Down
Arkansas Razerbacks 2	Standard	>50%	--	--	--	✓	--	60°C-10x	Heat Seal/Sew Down
Arkansas Razerbacks 3	Standard	>50%	--	--	--	✓	--	60°C-10x	Heat Seal/Sew Down
Georgia National Champions	Standard	--	✓	--	--	✓	--	40°C-10x	Heat Seal/Sew Down
Bored Ape Yacht Club	Standard	--	✓	--	--	✓	--	40°C-10x	Heat Seal/Sew Down
McDonald's	Standard	--	✓	--	--	✓	--	60°C-10x	Heat Seal/Sew Down

Title	MOQ	Recycled Content (%)	Sustainable	Low Water	Fully Recyclable	PMS Matching	Reactive	Wash Test	Application Method
KFC	Standard	--	✓	--	--	✓	--	40°C-10x	Heat Seal/Sew Down
Taco Bell	Standard	--	✓	--	--	✓	--	60°C-10x	Heat Seal/Sew Down
Team Liquid	Standard	--	✓	--	--	✓	--	60°C-10x	Heat Seal/Sew Down
Cloud 9	Standard	--	✓	--	--	✓	--	60°C-10x	Heat Seal/Sew Down
Thieves	Standard	--	✓	--	--	✓	--	60°C-10x	Heat Seal/Sew Down
Team Solo Mid	Standard	--	✓	--	--	✓	--	40°C-10x	Heat Seal/Sew Down
NASCAR	Standard	--	✓	--	--	✓	--	40°C-10x	Heat Seal/Sew Down

# CONTACT INFORMATION

## UNITED STATES HEADQUARTERS:

---

Red Brook Corporate Center, Suite 410  
300 Red Brook Blvd.  
Owings Mills, MD 21117  
PH: 800-365-6543

## ASIA HEADQUARTERS:

---

5/F Po Shing Industrial Bldg.  
23 Tai Yau St.  
San Po Kong, Kowloon, Hong Kong  
PH: 011-852-2323-8205

