

MATERIALS GUIDE

LIONBROTHERS
IDENTITY**MATTERS**TM

TABLE OF CONTENTS

■ SUSTAINABILITY

■ CORE MATERIALS - Oeko-tex certified, inventoried.

- **STOCKED**
 - Poly Twill
 - Felt
 - Reflective
- **PRINTABLE**
 - Poly Twill
 - Felt
 - Poly Pro
 - Suede
 - Furry Poly
 - Velvet
 - Open Hole Mesh
 - Closed Hole Mesh
 - TF Mesh
 - Reverse TF Mesh
 - Satin
 - Step Cloth
 - Dazzle
 - Glitter Twill
 - Reverse Glitter Twill

■ SPECIALTY MATERIALS - non-stock, non-certified.

- Sherpa
- Lamé
- Iridescent
- Foil
- Leather

■ TOOLS AND LIBRARIES

■ CONTACT INFORMATION

LEADING IN SUSTAINABILITY

■ MATERIALS

More than 95% of Lion's core materials are made from recycled fabrics and can be recycled, repurposed, and reused.

■ THREADS

All of Lion's core threads are made from 100% recycled polyester and are 100% recyclable.

■ ADHESIVES

Lion's core adhesives are fully recyclable.

RAW MATERIALS ARE RSL COMPLIANT



LION'S FAR EAST MANUFACTURING FACILITIES ARE



ZERO
EFFLUENT



ZERO
INCINERATION



ZERO
LANDFILL



SOLVENT FREE

AS WE FURTHER OUR TRANSITION TO SUSTAINABLE MATERIALS, ONE OF OUR TOP PRIORITIES IS THAT THEY RETAIN THE SAME QUALITY, AT THE SAME COST.

CORE MATERIALS

OEKO-TEX CERTIFIED, INVENTORIED.

POLY TWILL (STOCK) MATERIAL GUIDELINES

■ **HEAT SEAL:** Yes.

■ **EMBROIDERY:** Yes - no restrictions.

■ **PRINT:** No.

■ **LASER CUT:** Yes - no restrictions.

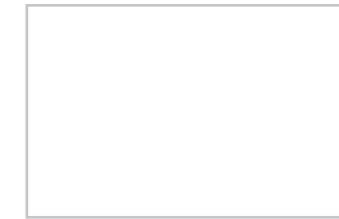
■ **APPLIQUÉ:** 3 layer maximum.

■ **MATERIAL CONTENT:** 100% polyester.

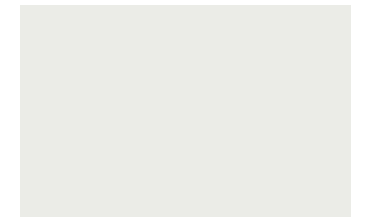
■ **CARRIER PAPER:** No requirements.



Part: 42379
Material Type: Poly Twill
Color Name: Black
PMS Match: Black 6C
Thread Match: 38631
Ming Shyang Code: D900



Part: 37155
Material Type: Poly Twill
Color Name: White
PMS Match: Bright White
Thread Match: 38166
Ming Shyang Code: D802



Part: 38836
Material Type: Poly Twill
Color Name: Cream
PMS Match: 11-4202TPG
Thread Match: 38801
Ming Shyang Code: D80028



Part: 42368
Material Type: Poly Twill
Color Name: Cream
PMS Match: 7499C
Thread Match: 41486
Ming Shyang Code: D70071



Part: 30360
Material Type: Poly Twill
Color Name: Sterling
PMS Match: Cool Gray 5C
Thread Match: 38635
Ming Shyang Code: D41AF8



Part: 42374
Material Type: Poly Twill
Color Name: King Grey
PMS Match: Cool Gray 8C
Thread Match: 38806
Ming Shyang Code: D40114



Part: 35546
Material Type: Poly Twill
Color Name: Red
PMS Match: 200C
Thread Match: 38807
Ming Shyang Code: D10067



Part: 42372
Material Type: Poly Twill
Color Name: Scarlet
PMS Match: 201C
Thread Match: 38513
Ming Shyang Code: D10039



Part: 36602
Material Type: Poly Twill
Color Name: Dk Red
PMS Match: 208C
Thread Match: 38410
Ming Shyang Code: D10077



Part: 35800
Material Type: Poly Twill
Color Name: Dk Red
PMS Match: 188C
Thread Match: 38128
Ming Shyang Code: D10090



Part: 42375
Material Type: Poly Twill
Color Name: Maroon
PMS Match: 7645C
Thread Match: 32233
Ming Shyang Code: D10124



Part: 32229
Material Type: Poly Twill
Color Name: Texas Orange
PMS Match: 1605C
Thread Match: 38235
Ming Shyang Code: DT784



Part: 42397
Material Type: Poly Twill
Color Name: Gold Nugget
PMS Match: 7407C
Thread Match: 39162
Ming Shyang Code: D70026



Part: 42369
Material Type: Poly Twill
Color Name: Old Gold
PMS Match: 7557C
Thread Match: 38804
Ming Shyang Code: D50118



Part: 36228
Material Type: Poly Twill
Color Name: Green
PMS Match: 3415C
Thread Match: 38101
Ming Shyang Code: D20013



Part: 42371
Material Type: Poly Twill
Color Name: Orange
PMS Match: 1665C
Thread Match: 38177
Ming Shyang Code: D10025



Part: 42373
Material Type: Poly Twill
Color Name: Gold
PMS Match: 137C
Thread Match: 38436
Ming Shyang Code: D50050



Part: 30335
Material Type: Poly Twill
Color Name: Gold
PMS Match: 1375C
Thread Match: 39170
Ming Shyang Code: D50013



Part: 42370
Material Type: Poly Twill
Color Name: Dk Green
PMS Match: 3308C
Thread Match: 38420
Ming Shyang Code: D20053



Part: 35522
Material Type: Poly Twill
Color Name: Blue
PMS Match: 283C
Thread Match: 40153
Ming Shyang Code: D30033



Part: 42367
Material Type: Poly Twill
Color Name: Royal
PMS Match: 294C
Thread Match: 38809
Ming Shyang Code: D30009



Part: 36922
Material Type: Poly Twill
Color Name: Gold
PMS Match: 1365C
Thread Match: 41336
Ming Shyang Code: D50028



Part: 30365
Material Type: Poly Twill
Color Name: Yellow
PMS Match: 116C
Thread Match: 38085
Ming Shyang Code: D50003



Part: 42398
Material Type: Poly Twill
Color Name: Vegas Gold
PMS Match: 7403C
Thread Match: 38771
Ming Shyang Code: D553



Part: 30690
Material Type: Poly Twill
Color Name: Blue
PMS Match: 7687C
Thread Match: 40921
Ming Shyang Code: D30061



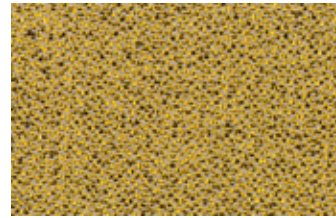
Part: 37880
Material Type: Poly Twill
Color Name: Navy
PMS Match: 282C
Thread Match: 38518
Ming Shyang Code: D30183



Part: 30361
Material Type: Poly Twill
Color Name: Uniform Blue
PMS Match: 539C
Thread Match: 38398
Ming Shyang Code: D60044



Part: 30351
Material Type: Poly Twill
Color Name: Purple
PMS Match: 2627C
Thread Match: 40112
Ming Shyang Code: D60012



Part: 43027
Material Type: Poly Twill
Color Name: Gold
PMS Match: 872C
Thread Match: 42348
Ming Shyang Code: M3007

FELT (STOCK)

MATERIAL GUIDELINES

- **HEAT SEAL:** Yes.
- **EMBROIDERY:** Yes - no restrictions.
- **PRINT:** No.
- **LASER CUT:** Yes - no restrictions.
- **APPLIQUÉ:** 3 layer maximum.
- **MATERIAL CONTENT:** 100% polyester.
- **CARRIER PAPER:** Low tack carrier paper required.



Part: 30627
Material Type: Felt
Color Name: Black
PMS Match: Black 3C
Thread Match: 38631
Ming Shyang Code: D900



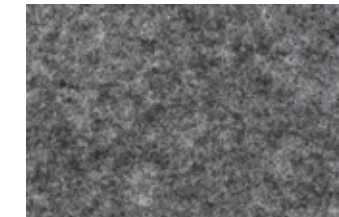
Part: 30642
Material Type: Felt
Color Name: White
PMS Match: Bright White
Thread Match: 38166
Ming Shyang Code: D802



Part: 35280
Material Type: Felt
Color Name: Ivory
PMS Match: 7499C
Thread Match: 40116
Ming Shyang Code: D70037



Part: 37151
Material Type: Felt
Color Name: Grey
PMS Match: 415C
Thread Match: 39238
Ming Shyang Code: D40108



Part: 41048
Material Type: Felt
Color Name: Ash Grey
PMS Match: Cool Gray 10C
Thread Match: 40336
Ming Shyang Code: D40192



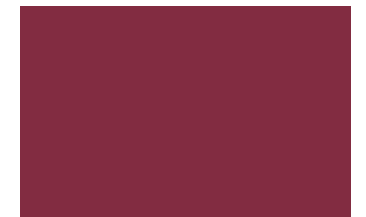
Part: 39343
Material Type: Felt
Color Name: Red
PMS Match: 206C
Thread Match: 38807
Ming Shyang Code: D10067



Part: 36248
Material Type: Felt
Color Name: Red
PMS Match: 200C
Thread Match: 38333
Ming Shyang Code: D10066



Part: 38902
Material Type: Felt
Color Name: Red
PMS Match: 207C
Thread Match: 38168
Ming Shyang Code: D10082



Part: 35278
Material Type: Felt
Color Name: Dk Red
PMS Match: 7638C
Thread Match: 38589
Ming Shyang Code: D10119



Part: 30600
Material Type: Felt
Color Name: Orange
PMS Match: 2028C
Thread Match: 38177
Ming Shyang Code: D10025



Part: 38715
Material Type: Felt
Color Name: Orange
PMS Match: Bright Red C
Thread Match: 38980
Ming Shyang Code: D10016



Part: 38603
Material Type: Felt
Color Name: Gold
PMS Match: 137C
Thread Match: 38436
Ming Shyang Code: D50050



Part: 35279
Material Type: Felt
Color Name: Royal
PMS Match: 287C
Thread Match: 38126
Ming Shyang Code: D30027



Part: 30585
Material Type: Felt
Color Name: Navy
PMS Match: 303C
Thread Match: 40952
Ming Shyang Code: D40009



Part: 38408
Material Type: Felt
Color Name: Navy
PMS Match: 5395C
Thread Match: 39306
Ming Shyang Code: D30186



Part: 39002
Material Type: Felt
Color Name: Yellow
PMS Match: 123C
Thread Match: 38677
Ming Shyang Code: D50041



Part: 41011
Material Type: Felt
Color Name: Gold
PMS Match: 467C
Thread Match: 40953
Ming Shyang Code: D780



Part: 37902
Material Type: Felt
Color Name: Gold
PMS Match: 7550C
Thread Match: 38161
Ming Shyang Code: D50105



Part: 38764
Material Type: Felt
Color Name: Purple
PMS Match: 2758C
Thread Match: 39335
Ming Shyang Code: D60030



Part: 37424
Material Type: Felt
Color Name: Brown
PMS Match: 476C
Thread Match: 38632
Ming Shyang Code: D70069



Part: 36882
Material Type: Felt
Color Name: Green
PMS Match: 356C
Thread Match: 38782
Ming Shyang Code: D233



Part: 37903
Material Type: Felt
Color Name: Dk Green
PMS Match: 3435C
Thread Match: 38420
Ming Shyang Code: D20053

REFLECTIVE (STOCK) MATERIAL GUIDELINES

- **HEAT SEAL:** Yes.
- **EMBROIDERY:** Yes - no restrictions.
- **PRINT:** No.
- **LASER CUT:** Yes - no restrictions.
- **APPLIQUÉ:** Must be top layer, unless appliqué layer is sewn down. 3 layer maximum.
- **MATERIAL CONTENT:** 100% polyester.
- **CARRIER PAPER:** Low tack carrier paper required.



Part: 42423
Material Type: Reflective
Color Name: Black
PMS Match: Black C
Thread Match: 38631
Ming Shyang Code: D900



Part: 42935
Material Type: Reflective
Color Name: White
PMS Match: Bright White
Thread Match: 38166
Ming Shyang Code: D802



Part: 42721
Material Type: Reflective
Color Name: Red
PMS Match: 186C
Thread Match: 38777
Ming Shyang Code: D700



Part: 42343
Material Type: Reflective
Color Name: Silver
PMS Match: 424C
Thread Match: 40868
Ming Shyang Code: D413



Part: 42672A
Material Type: Reflective
Color Name: LT Gold
PMS Match: 466C
Thread Match: 42336
Ming Shyang Code: D41N61



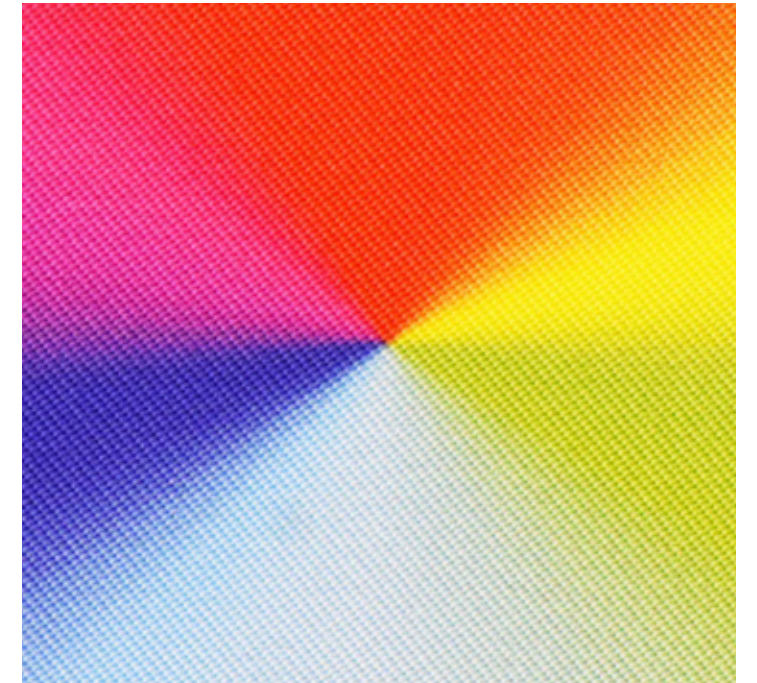
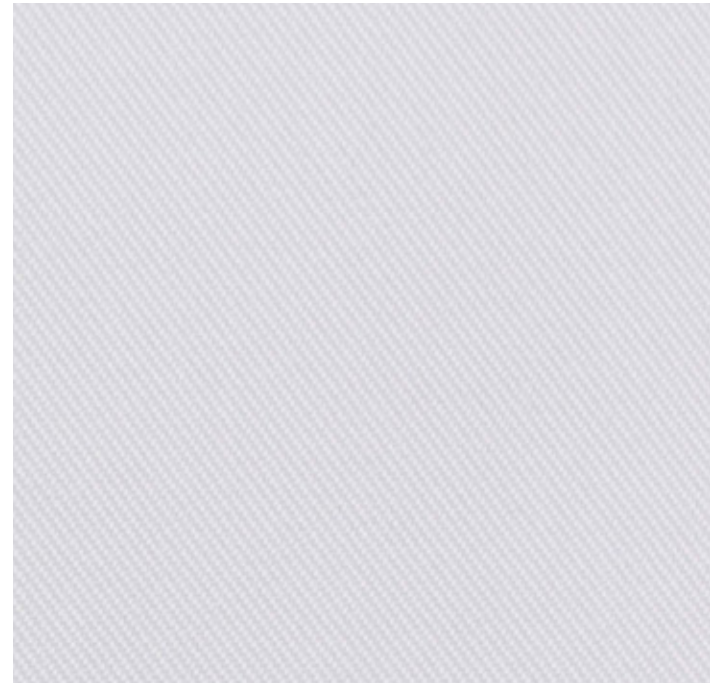
Part: 42731
Material Type: Reflective
Color Name: Dk Rainbow
PMS Match: Black 6C
Thread Match: 38631
Ming Shyang Code: D900

POLY TWILL (PRINT)

PART: 42651

MATERIAL GUIDELINES

- **HEAT SEAL:** Yes.
- **EMBROIDERY:** Yes - no restrictions.
- **PRINT:** Yes - sublimation, PMS matchable.
- **LASER CUT:** Yes - no restrictions.
- **APPLIQUÉ:** 3 layer maximum.
- **MATERIAL CONTENT:** 100% polyester.
- **CARRIER PAPER:** No requirements.



FELT (PRINT)

PART: 30642

MATERIAL GUIDELINES

- **HEAT SEAL:** Yes.
- **EMBROIDERY:** Yes - no restrictions.
- **PRINT:** Yes - Infusion, PMS matchable.
- **LASER CUT:** Yes - no restrictions.
- **APPLIQUÉ:** 2 layer maximum.
- **MATERIAL CONTENT:** 100% polyester.
- **CARRIER PAPER:** Low tack carrier paper required.

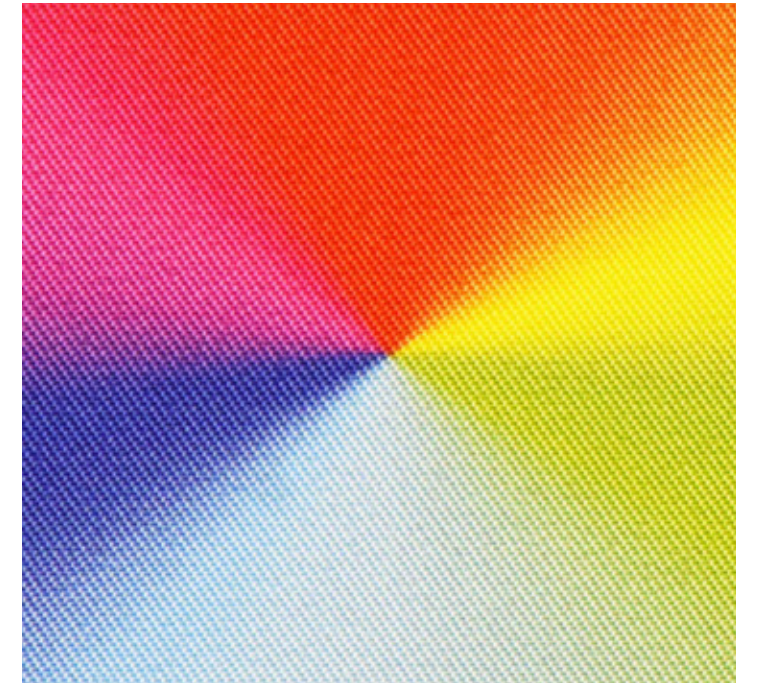
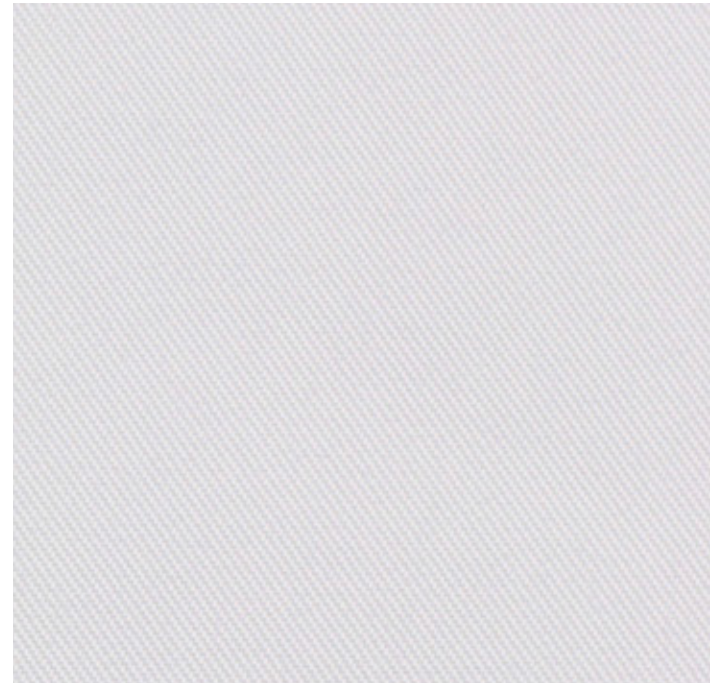


POLY PRO

PART: 42639

MATERIAL GUIDELINES

- **HEAT SEAL:** Yes.
- **EMBROIDERY:** Yes - no restrictions.
- **PRINT:** Yes - sublimation, PMS matchable.
- **LASER CUT:** Yes - no restrictions.
- **APPLIQUÉ:** 3 layer maximum.
- **MATERIAL CONTENT:** 100% polyester.
- **CARRIER PAPER:** No requirements.

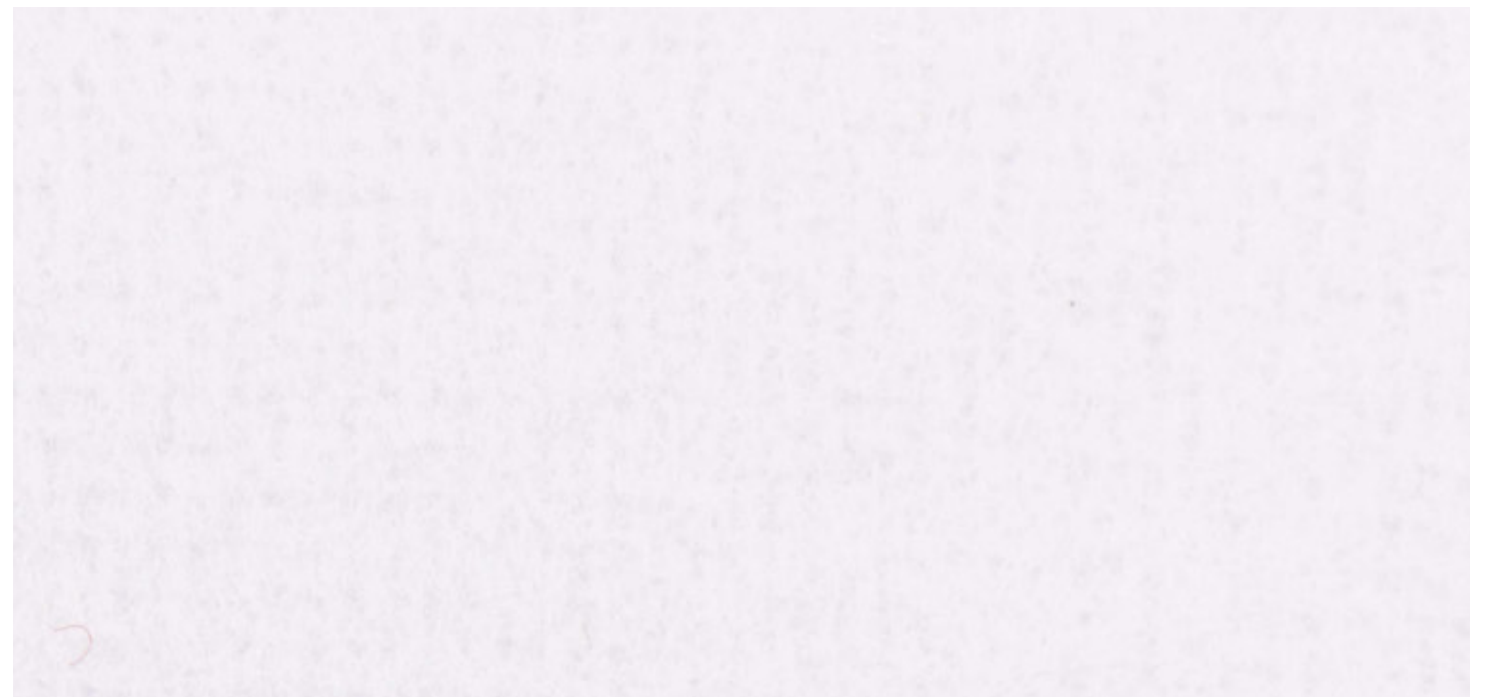
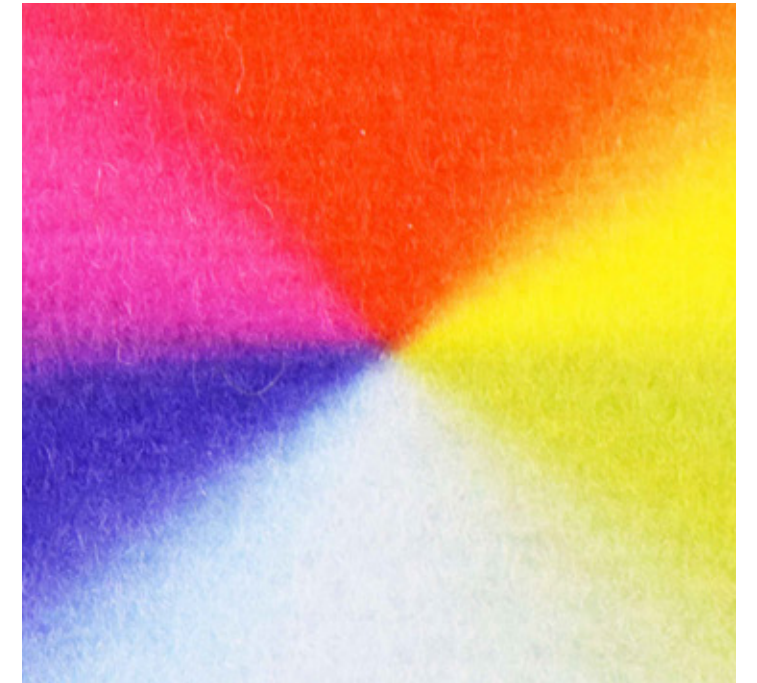


SUEDE

PART: 42617

MATERIAL GUIDELINES

- **HEAT SEAL:** Yes.
- **EMBROIDERY:** Yes - no restrictions.
- **PRINT:** Yes - sublimation, PMS matchable.
- **LASER CUT:** Yes - no restrictions.
- **APPLIQUÉ:** 3 layer maximum.
- **MATERIAL CONTENT:** 100% polyester.
- **CARRIER PAPER:** No requirements.



FURRY POLY

PART: 40724

MATERIAL GUIDELINES

- **HEAT SEAL:** Yes.
- **EMBROIDERY:** Yes - no restrictions.
- **PRINT:** Yes - Infusion, PMS matchable.
- **LASER CUT:** Yes - no restrictions. Slight edge variances will occur after laser cutting due to direction of material pile.
- **APPLIQUÉ:** 3 layer maximum.
- **MATERIAL CONTENT:** 100% polyester.
- **CARRIER PAPER:** No requirements.

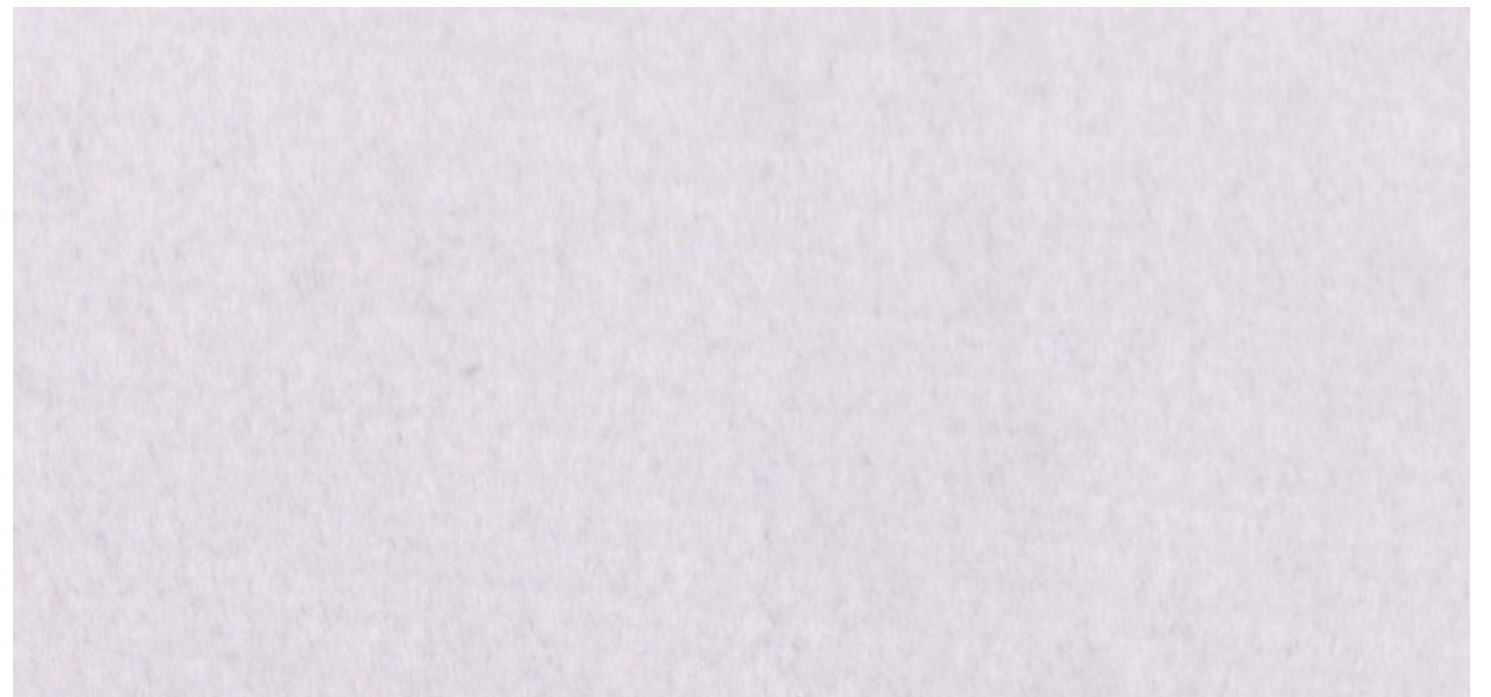


VELVET

PART: 43480

MATERIAL GUIDELINES

- **HEAT SEAL:** Yes.
- **EMBROIDERY:** Yes - avoid fine detail and small elements that may get partially covered by material pile.
- **PRINT:** Yes - Infusion, PMS matchable.
- **LASER CUT:** Yes - no restrictions. Laser etchable.
- **APPLIQUÉ:** 3 layer maximum.
- **MATERIAL CONTENT:** 100% polyester.
- **CARRIER PAPER:** No requirements.

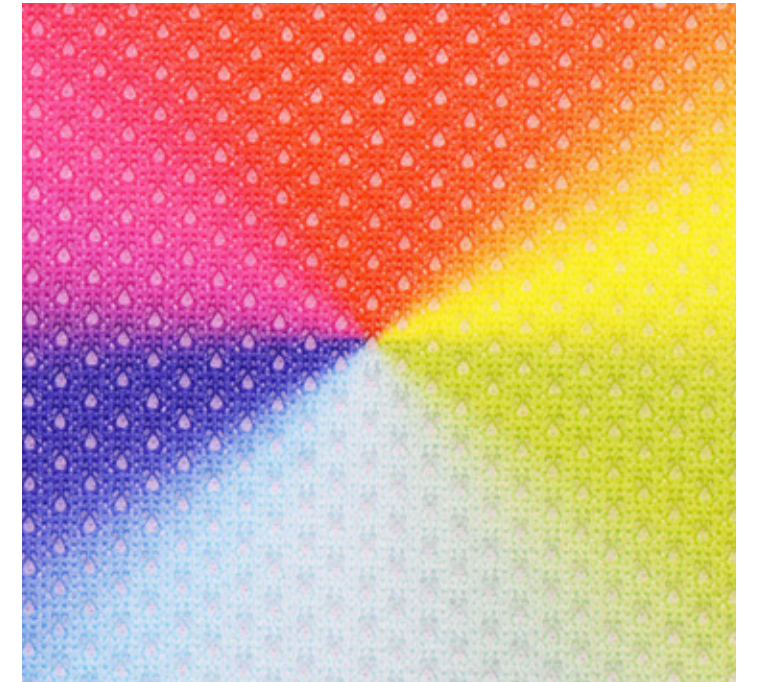
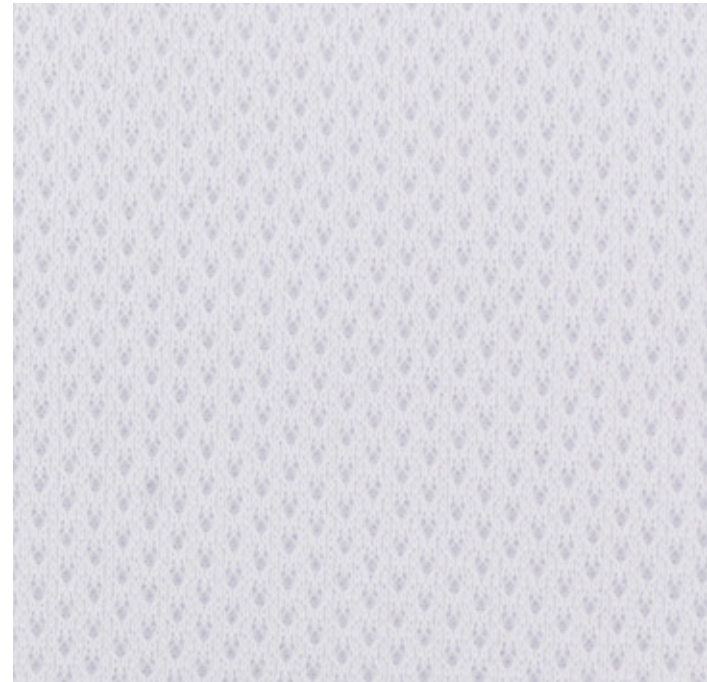


OPEN HOLE MESH

PART: 37386

MATERIAL GUIDELINES

- **HEAT SEAL:** Yes.
- **EMBROIDERY:** Yes - for best results avoid heavy stitching. Closed hole mesh is a suitable alternative for designs with heavy embroidery.
- **PRINT:** Yes - sublimation, PMS matchable.
- **LASER CUT:** Yes - slight edge fraying can occur after repeated washings. To avoid this potential, add stitching or a cap to the edge.
- **APPLIQUÉ:** For best results, use as a single appliqué layer. If the design contains embroidery, this material can't be the ground layer and can only be an appliqué.
- **MATERIAL CONTENT:** 100% polyester.
- **CARRIER PAPER:** Low tack carrier paper required.

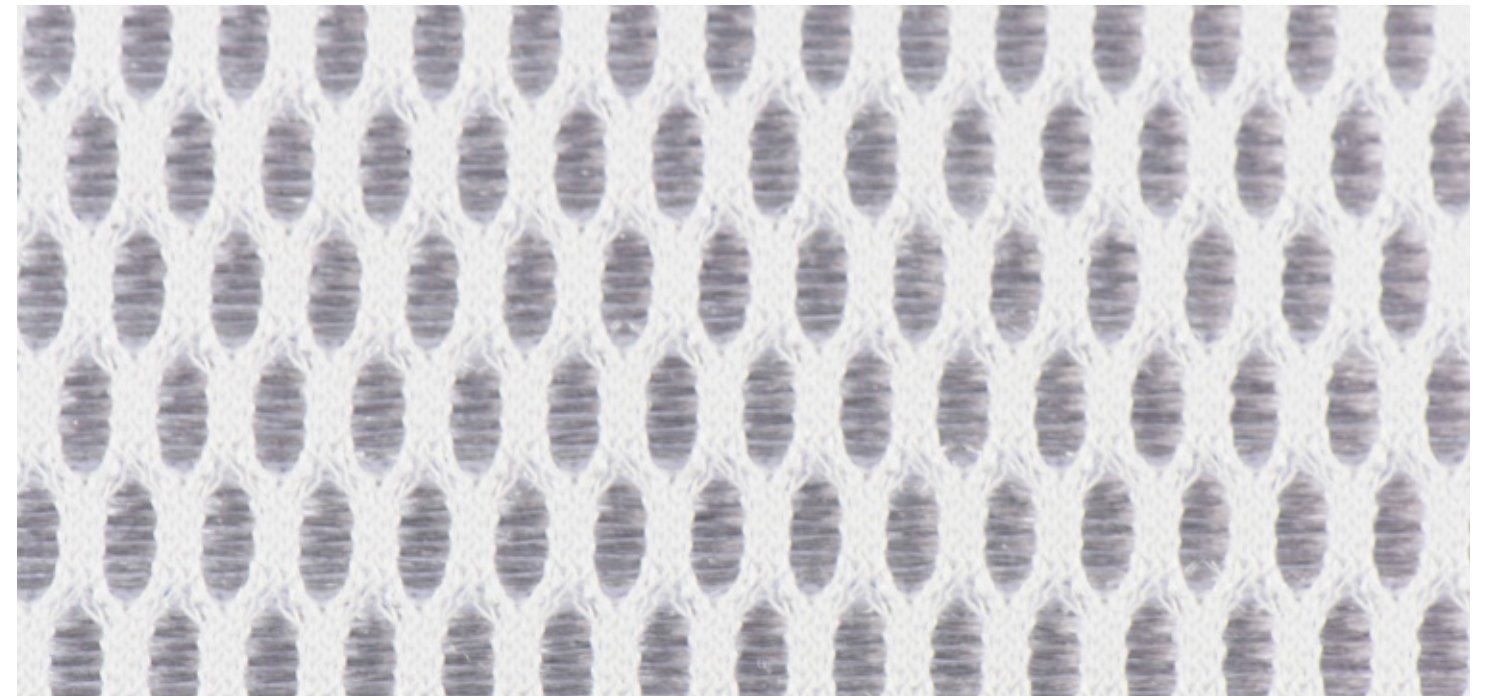
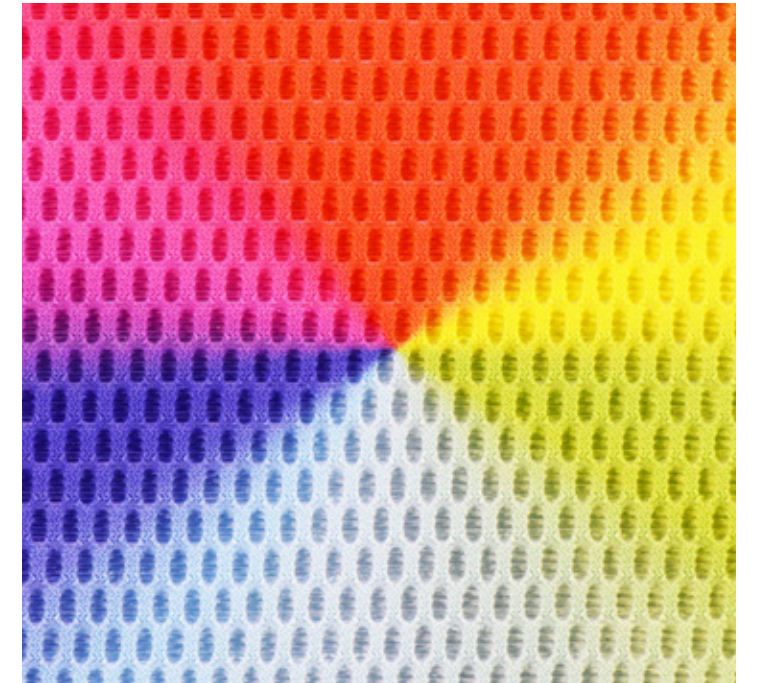
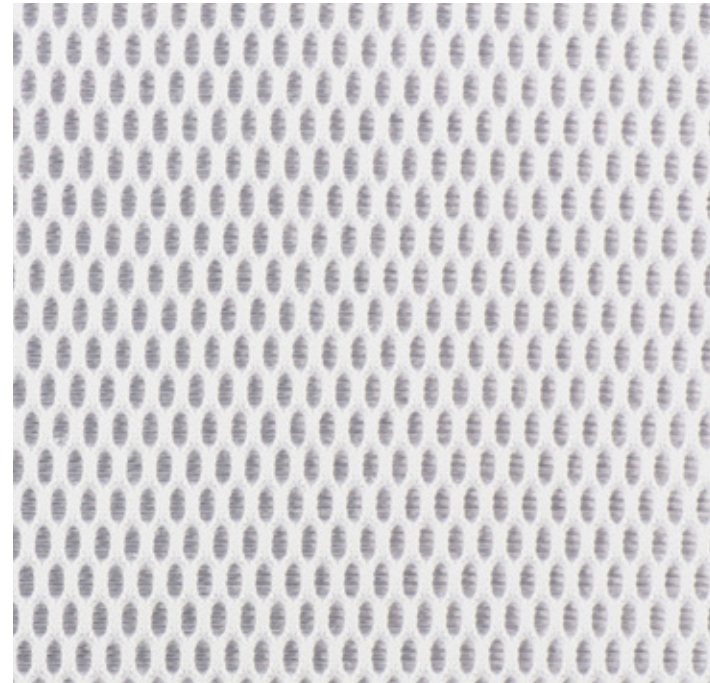


CLOSED HOLE MESH

PART: 42708

MATERIAL GUIDELINES

- **HEAT SEAL:** Yes.
- **EMBROIDERY:** Yes - surface texture of mesh will disrupt embroidery. For best results, add a ground of another material to help support heavy embroidery.
- **PRINT:** Yes - sublimation, PMS matchable.
- **LASER CUT:** Yes - slight edge fraying can occur after repeated washings. To avoid this potential, add stitching or a cap to the edge.
- **APPLIQUÉ:** For best results, use as a single appliqué layer. If the design contains embroidery, this material can't be the ground layer and can only be an appliqué.
- **MATERIAL CONTENT:** 100% polyester.
- **CARRIER PAPER:** Low tack carrier paper required.

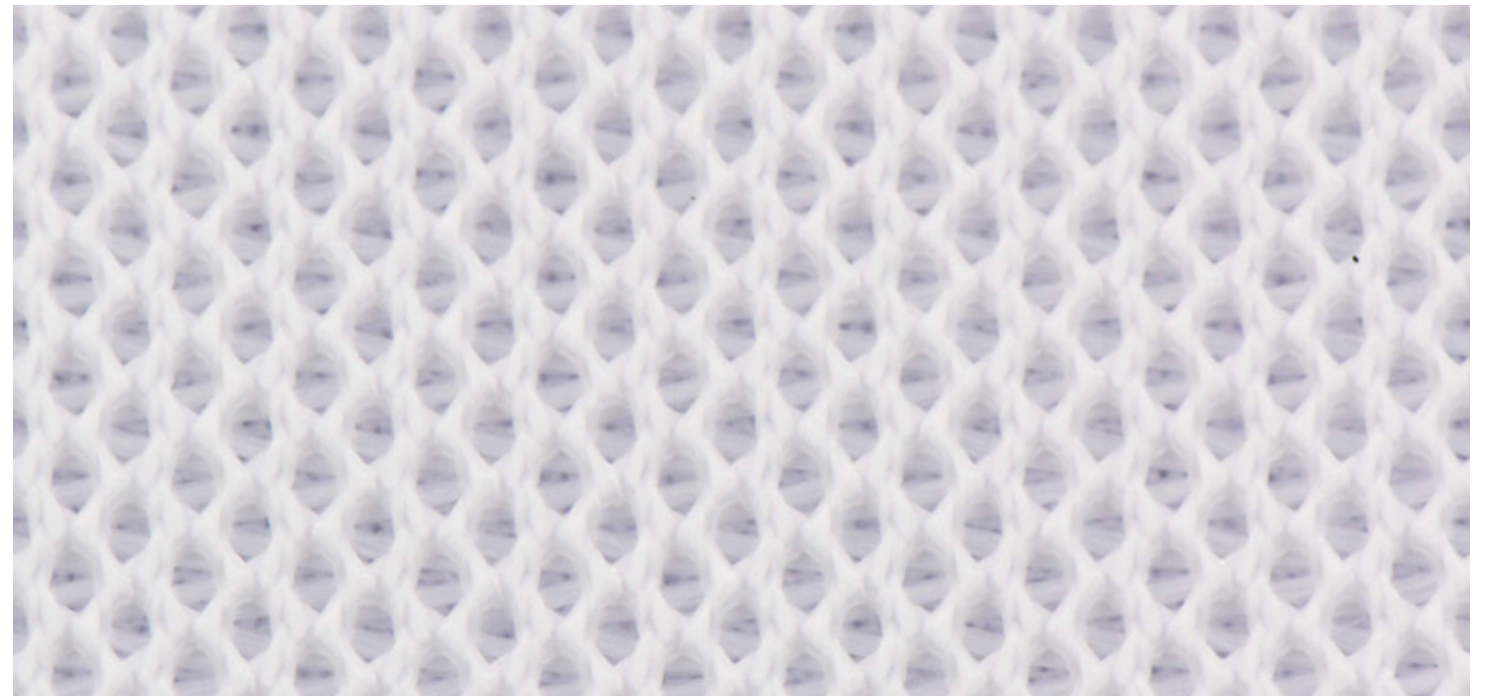
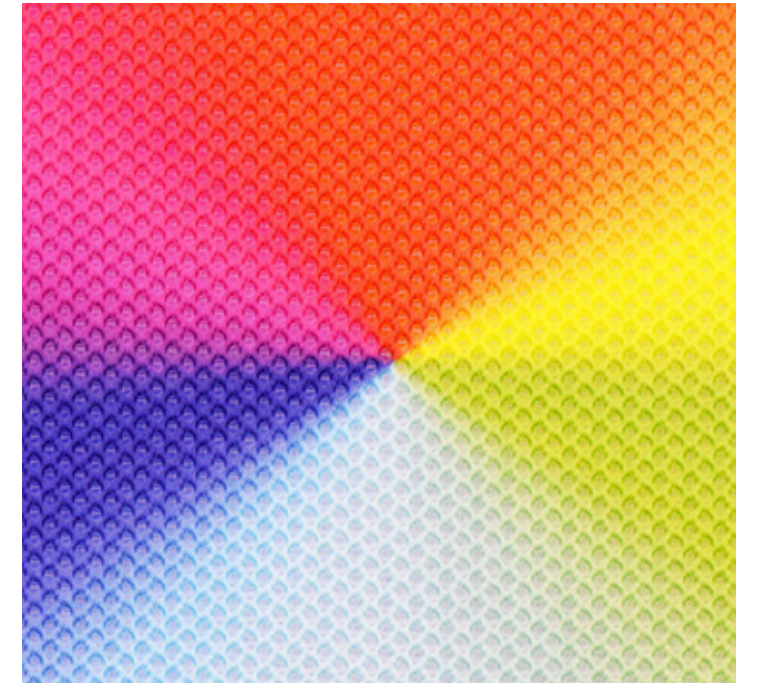
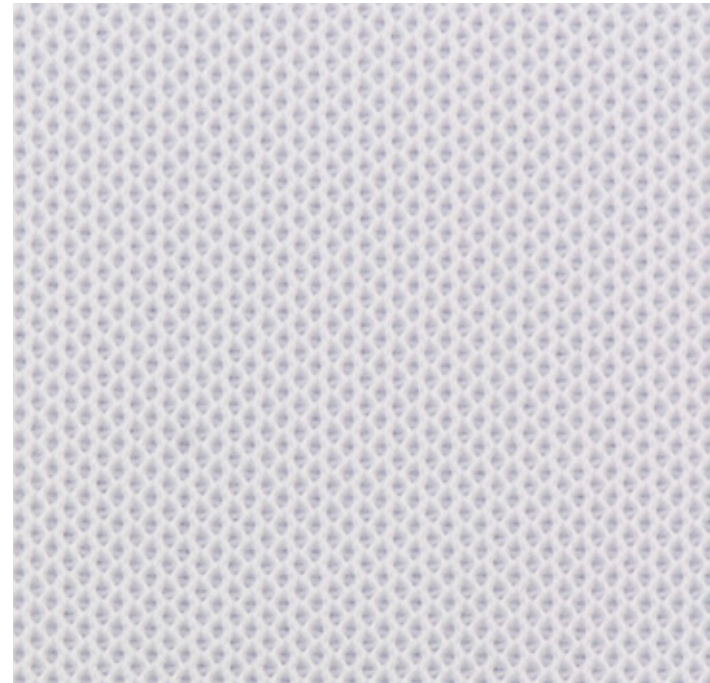


TF MESH

PART: 43009

MATERIAL GUIDELINES

- **HEAT SEAL:** Yes.
- **EMBROIDERY:** Yes - no restrictions.
- **PRINT:** Yes - sublimation, PMS matchable.
- **LASER CUT:** Yes - no restrictions.
- **APPLIQUÉ:** 2 layer maximum.
- **MATERIAL CONTENT:** 100% polyester.
- **CARRIER PAPER:** No requirements.

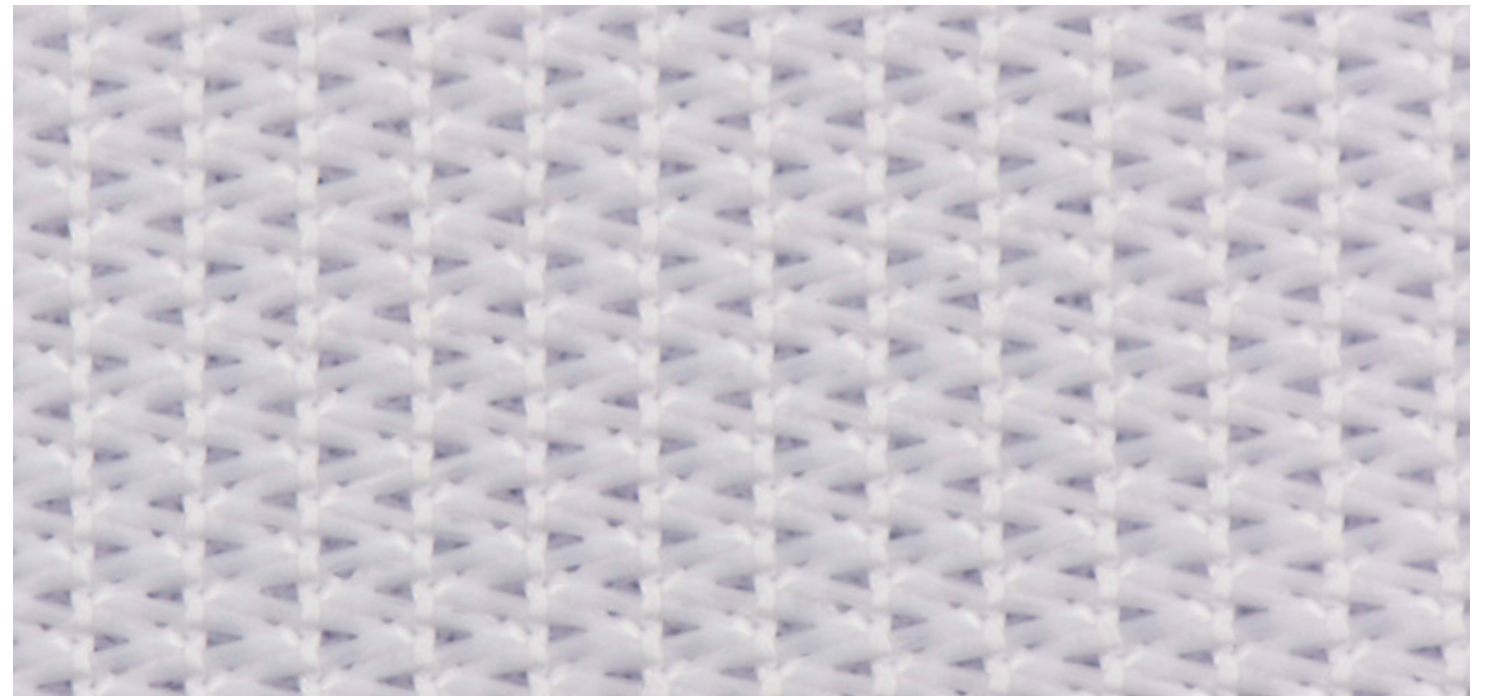
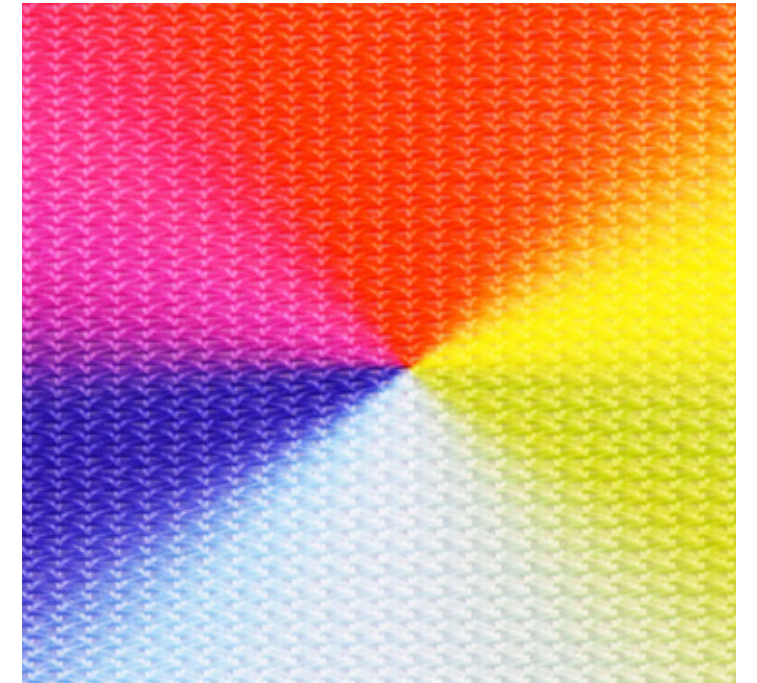
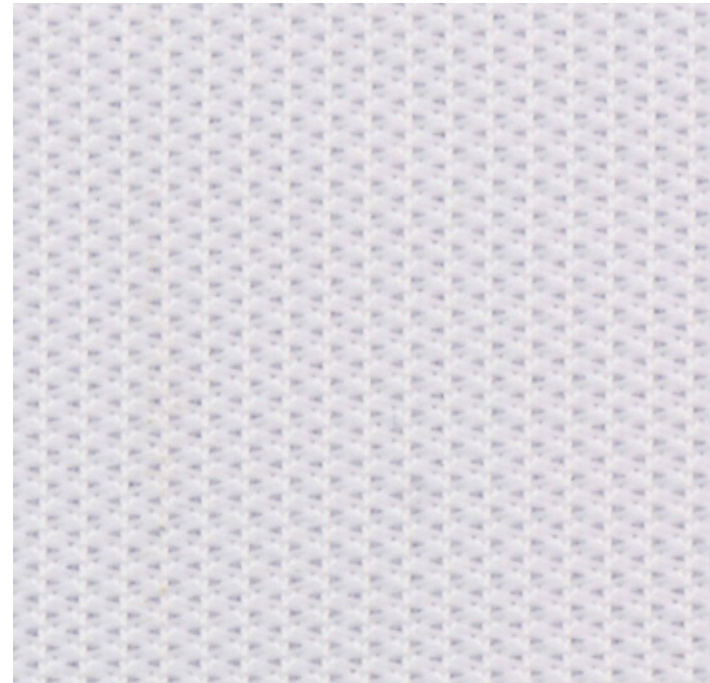


REVERSE TF MESH

PART: 43009R

MATERIAL GUIDELINES

- **HEAT SEAL:** Yes.
- **EMBROIDERY:** Yes - no restrictions.
- **PRINT:** Yes - sublimation, PMS matchable.
- **LASER CUT:** Yes - no restrictions.
- **APPLIQUÉ:** 2 layer maximum.
- **MATERIAL CONTENT:** 100% polyester.
- **CARRIER PAPER:** No requirements.

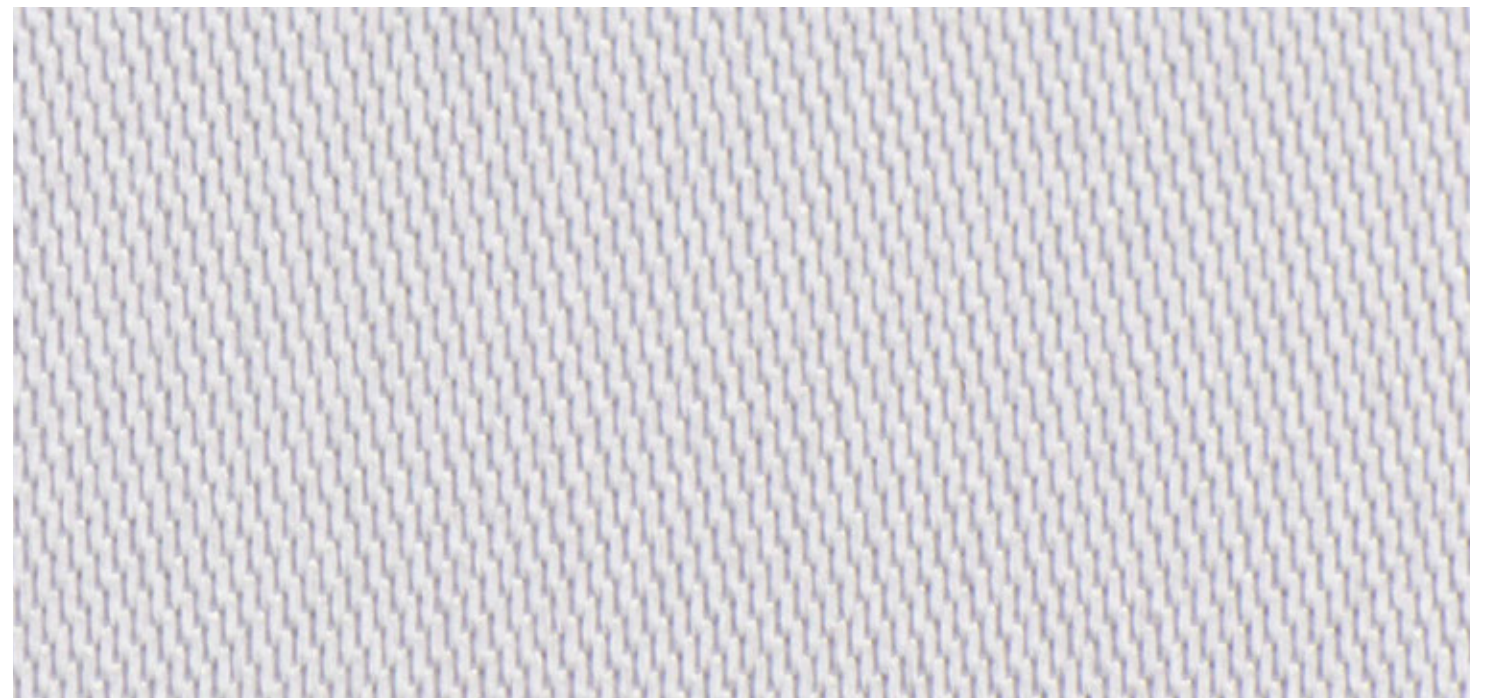
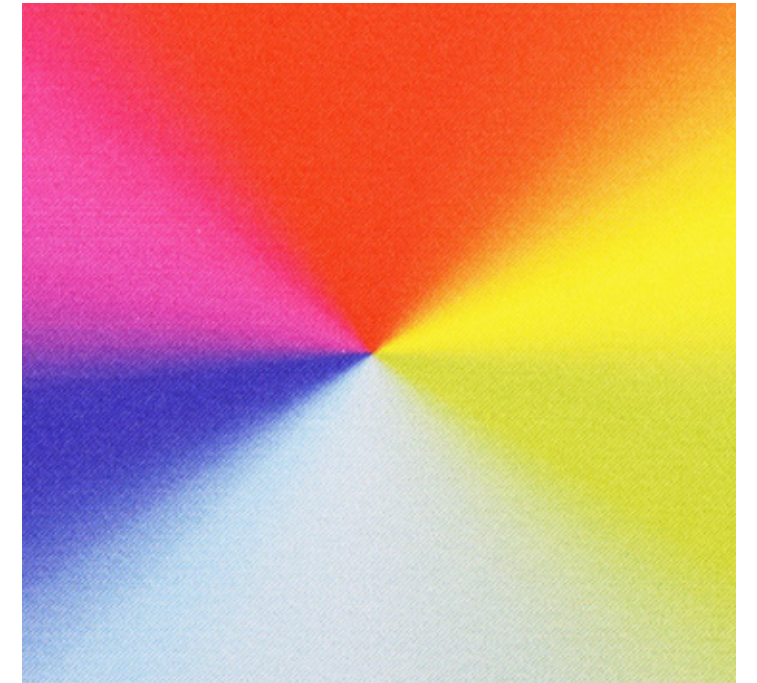
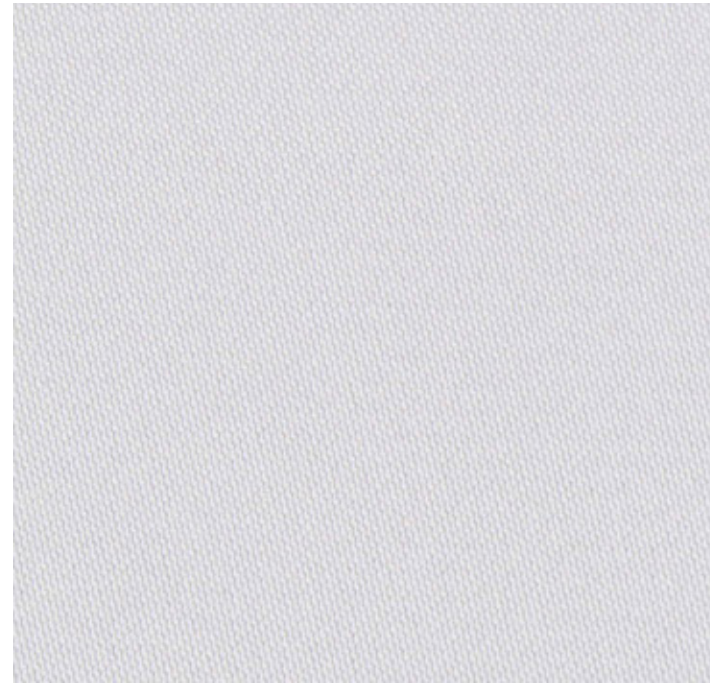


SATIN

PART: 42551

MATERIAL GUIDELINES

- **HEAT SEAL:** Yes.
- **EMBROIDERY:** Yes - for best results avoid heavy stitching or add a ground layer of another material to help support the stitching.
- **PRINT:** Yes - sublimation, PMS matchable.
- **LASER CUT:** Yes - can not be the bottom layer of kiss cut product.
- **APPLIQUÉ:** 3 layer maximum.
- **MATERIAL CONTENT:** 100% polyester.
- **CARRIER PAPER:** Text requires light weight, high tack carrier paper.

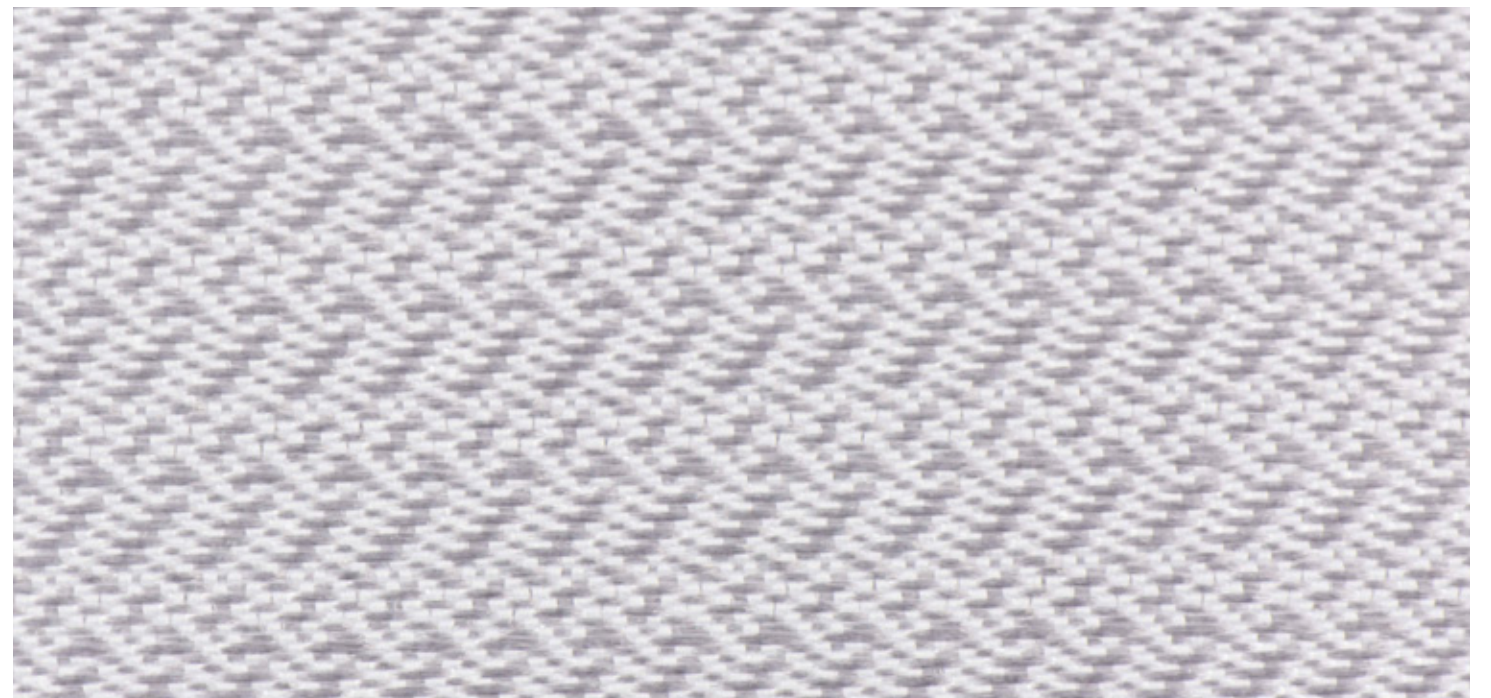
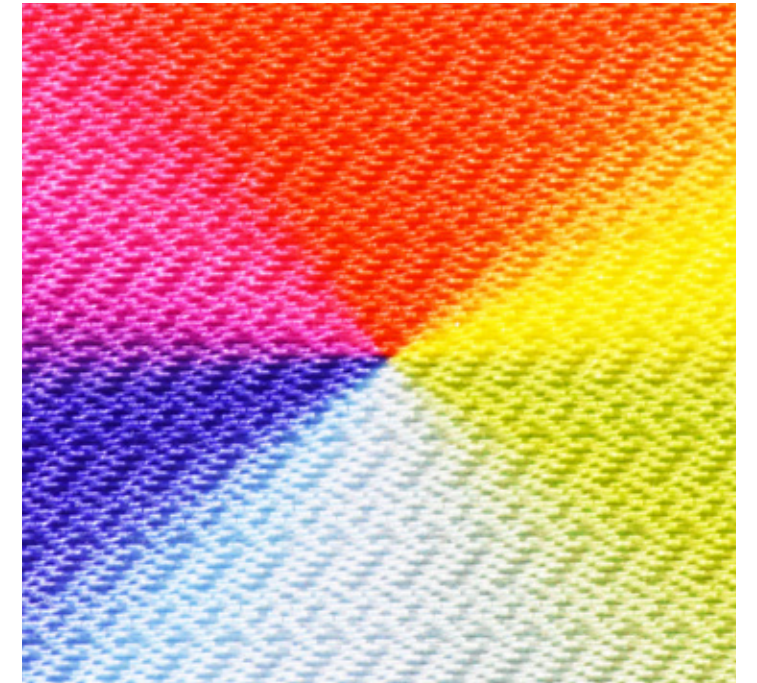


STEP CLOTH

PART: 42806

MATERIAL GUIDELINES

- **HEAT SEAL:** Yes.
- **EMBROIDERY:** Yes - no restrictions.
- **PRINT:** Yes - sublimation, PMS matchable.
- **LASER CUT:** Yes - slight edge fraying can occur after repeated washings. To avoid this potential, add stitching or a cap to the edge.
- **APPLIQUÉ:** 3 layer maximum.
- **MATERIAL CONTENT:** 100% polyester.
- **CARRIER PAPER:** No requirements.

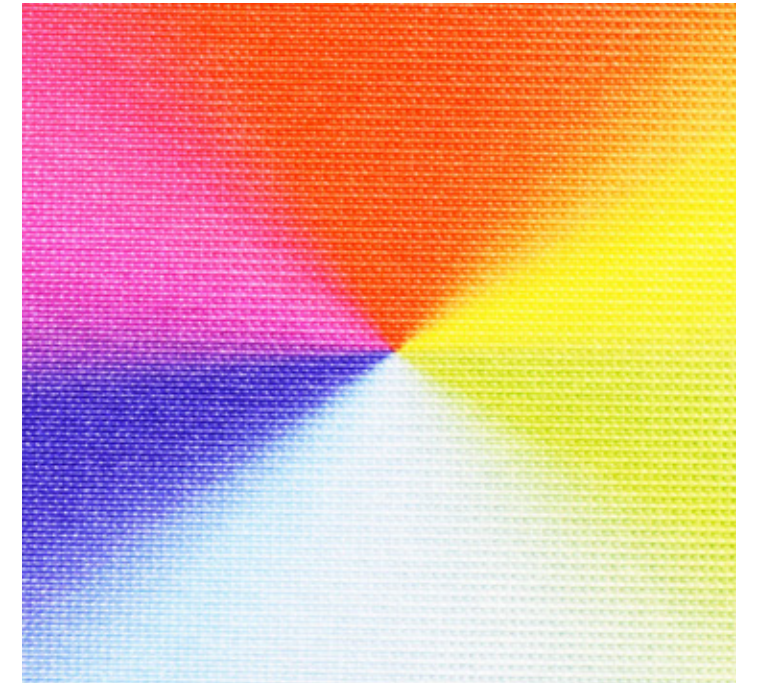
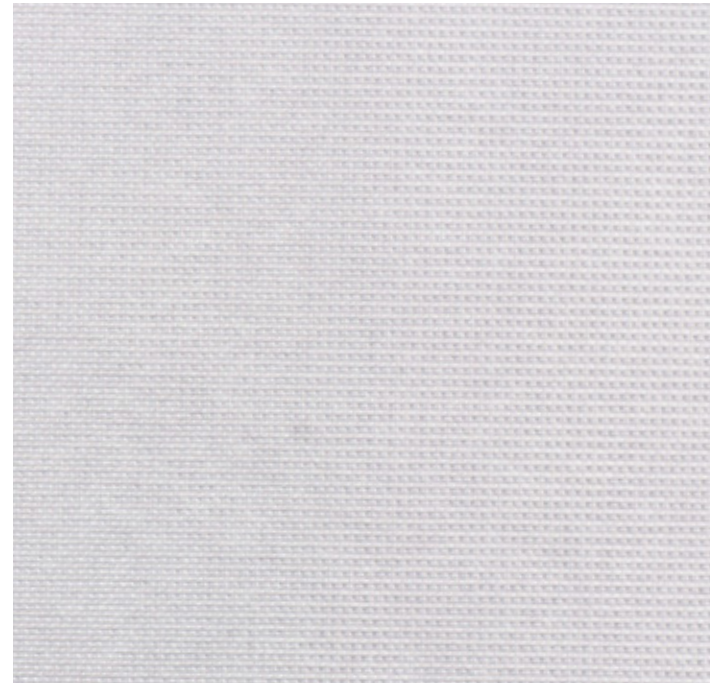


DAZZLE

PART: 43584

MATERIAL GUIDELINES

- **HEAT SEAL:** Yes.
- **EMBROIDERY:** Yes - no restrictions.
- **PRINT:** Yes - sublimation, PMS matchable.
- **LASER CUT:** Yes - slight edge fraying can occur after repeated washings. To avoid this potential, add stitching or a cap to the edge.
- **APPLIQUÉ:** 3 layer maximum.
- **MATERIAL CONTENT:** 100% polyester.
- **CARRIER PAPER:** No requirements.

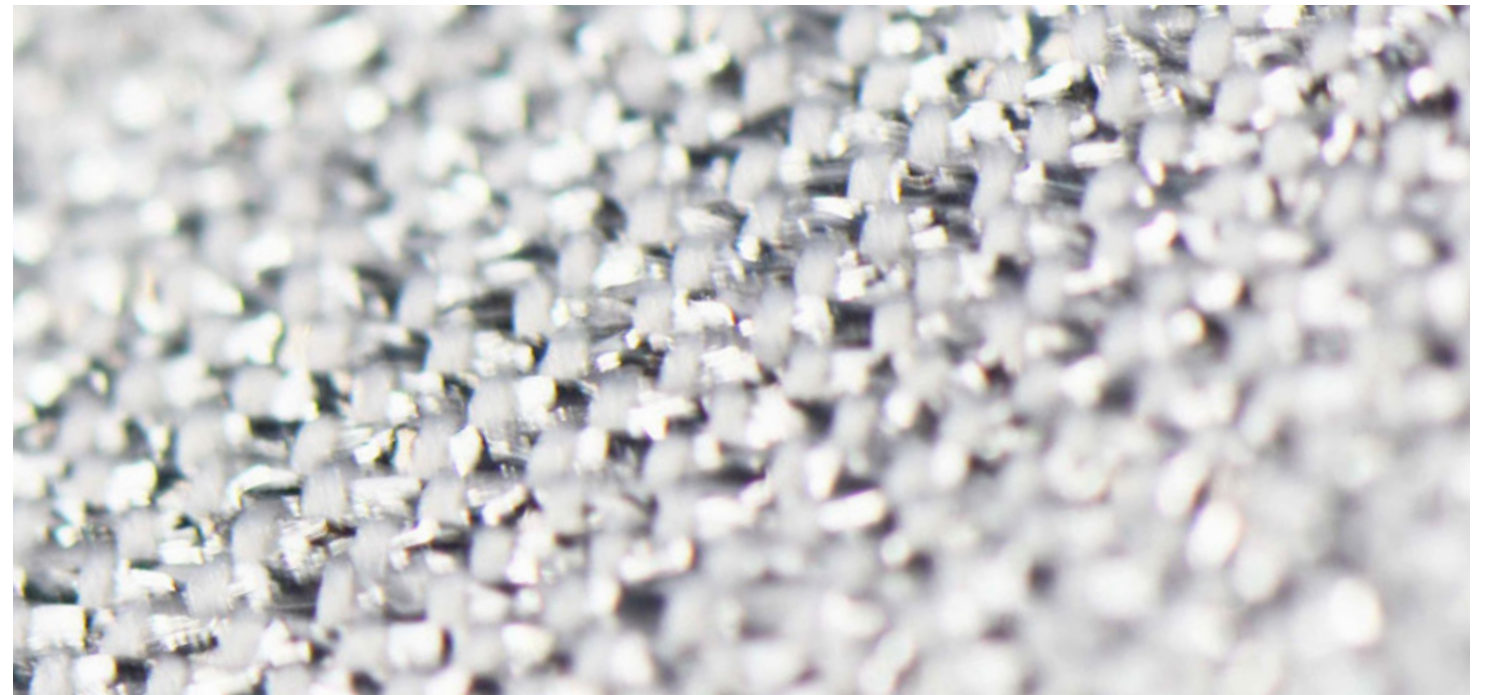
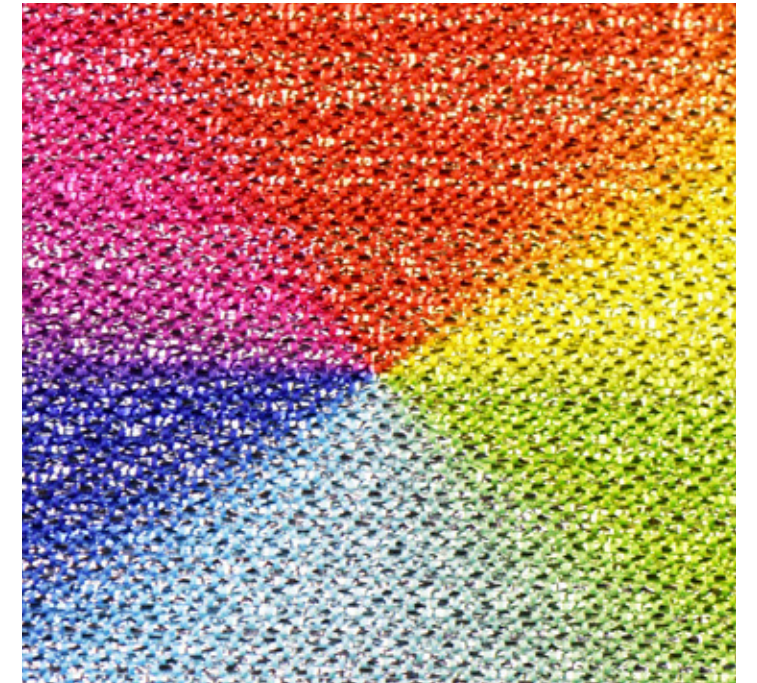
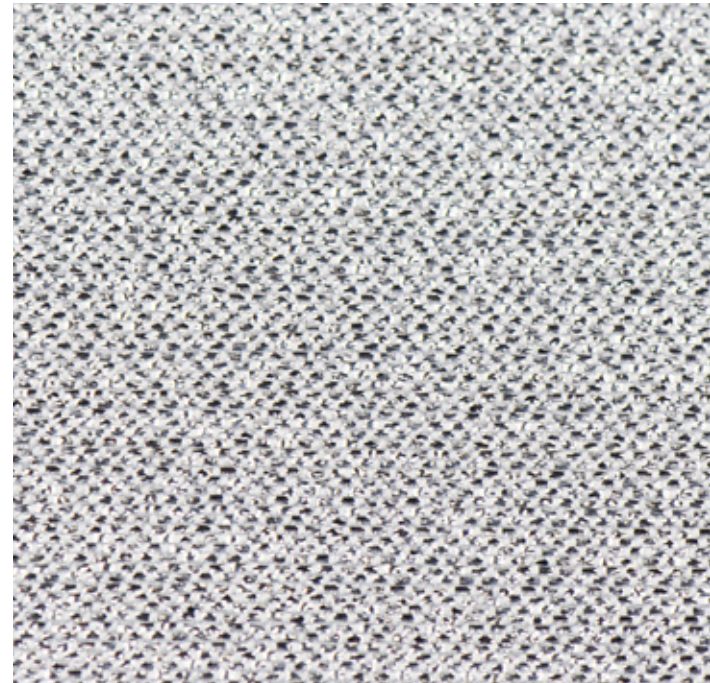


GLITTER TWILL

PART: 30755

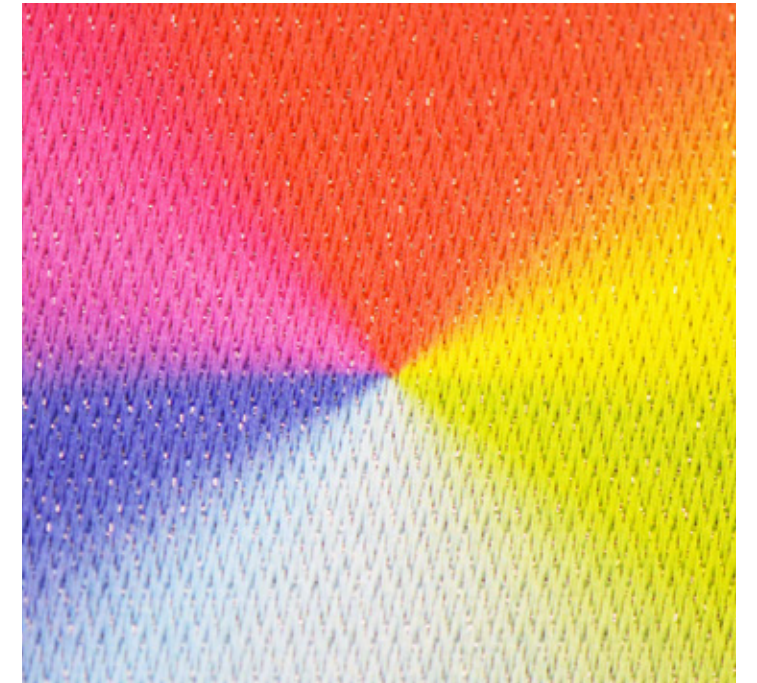
MATERIAL GUIDELINES

- **HEAT SEAL:** Yes.
- **EMBROIDERY:** Yes - no restrictions.
- **PRINT:** Yes - sublimation, no exact color matching.
For best results use silver color option.
- **LASER CUT:** Yes - no restrictions.
- **APPLIQUÉ:** 3 layer maximum.
- **MATERIAL CONTENT:** 100% polyester.
- **CARRIER PAPER:** No requirements.



REVERSE GLITTER TWILL PART: 30755R MATERIAL GUIDELINES

- **HEAT SEAL:** Yes.
- **EMBROIDERY:** Yes - no restrictions.
- **PRINT:** Yes - sublimation, PMS matchable only with silver option.
- **LASER CUT:** Yes - no restrictions.
- **APPLIQUÉ:** 3 layer maximum.
- **MATERIAL CONTENT:** 100% polyester.
- **CARRIER PAPER:** No requirements.



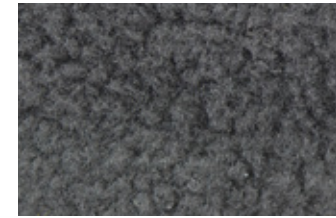
SPECIALTY MATERIALS

NON-STOCK, NON-CERTIFIED.

SHERPA

MATERIAL GUIDELINES

- **HEAT SEAL:** Yes.
- **EMBROIDERY:** Yes - due to weight and texture of material, best used with limited stitching.
- **PRINT:** No.
- **LASER CUT:** Yes - no restrictions.
- **APPLIQUÉ:** Single layer or appliqué only. 2 layer maximum.
- **MATERIAL CONTENT:** 100% polyester.
- **CARRIER PAPER:** No requirements.



Part: 41136
Material Type: Sherpa
Color Name: Black
PMS Match: Black 6C
Thread Match: 41501
Ming Shyang Code: D30211



Part: 41135
Material Type: Sherpa
Color Name: Cream
PMS Match: 13-4108 TPG
Thread Match: 38951
Ming Shyang Code: D520

LAMÉ

MATERIAL GUIDELINES

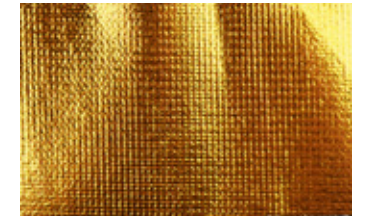
- **HEAT SEAL:** Yes.
- **EMBROIDERY:** Yes - due to thinness of material, best restricted to tacking stitches.
- **PRINT:** No.
- **LASER CUT:** Yes - no restrictions.
- **APPLIQUÉ:** Single layer or top layer appliqué only. Requires smooth ground layer. 3 layer maximum.
- **MATERIAL CONTENT:** 100% polyester.
- **CARRIER PAPER:** Low tack carrier paper required.



Part: 41409
Material Type: Lame
Color Name: Black
PMS Match: Black 6C
Thread Match: 38631
Ming Shyang Code: D900



Part: 40459
Material Type: Lame
Color Name: Gold
PMS Match: 871C
Thread Match: 39183
Ming Shyang Code: D80004



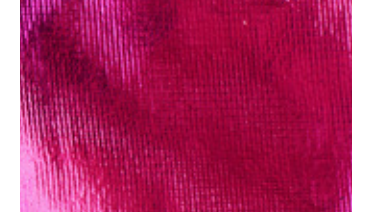
Part: 41005
Material Type: Lame
Color Name: Gold
PMS Match: 131C
Thread Match: 41559
Ming Shyang Code: M4006



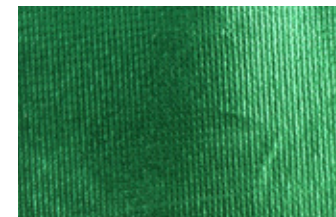
Part: 40460
Material Type: Lame
Color Name: Silver
PMS Match: 877C
Thread Match: 41166
Ming Shyang Code: M3001



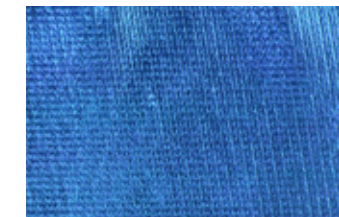
Part: 40461
Material Type: Lame
Color Name: Silver
PMS Match: 877C
Thread Match: 40372
Ming Shyang Code: SN101



Part: 40462
Material Type: Lame
Color Name: Pink
PMS Match: 226C
Thread Match: 39533
Ming Shyang Code: DS023



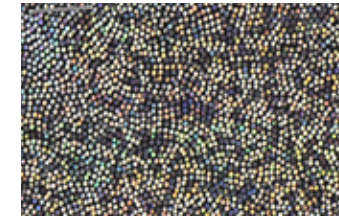
Part: 41564
Material Type: Lame
Color Name: Green
PMS Match: 3425C
Thread Match: 39119
Ming Shyang Code: D20007



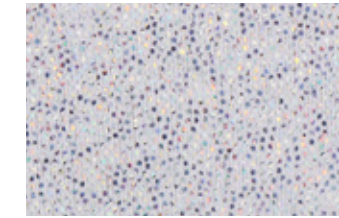
Part: 40464
Material Type: Lame
Color Name: Blue
PMS Match: 300C
Thread Match: 38564
Ming Shyang Code: D30110

IRIDESCENT MATERIAL GUIDELINES

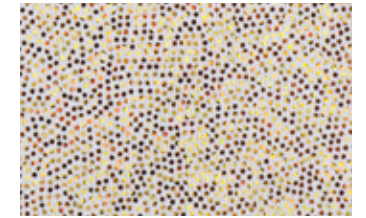
- **HEAT SEAL:** Yes.
- **EMBROIDERY:** Yes - due to thinness of material, best restricted to tacking stitches.
- **PRINT:** No.
- **LASER CUT:** Yes - no restrictions.
- **APPLIQUÉ:** Single layer or top layer appliqué only. Requires smooth ground layer. 3 layer maximum.
- **MATERIAL CONTENT:** 100% polyester.
- **CARRIER PAPER:** No requirements.



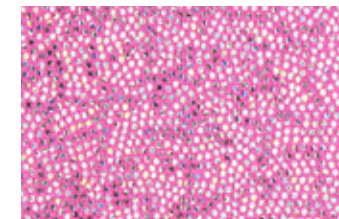
Part: 40450
Material Type: Iridescent
Color Name: Black
PMS Match: Black C
Thread Match: 38631
Ming Shyang Code: D900



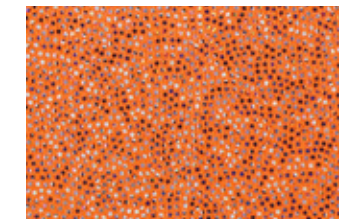
Part: 40452
Material Type: Iridescent
Color Name: White
PMS Match: 658C
Thread Match: 38166
Ming Shyang Code: D802



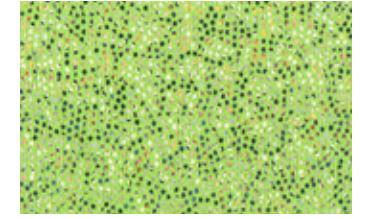
Part: 41247
Material Type: Iridescent
Color Name: Ivory
PMS Match: Warm Grey 1C
Thread Match: 40116
Ming Shyang Code: D70037



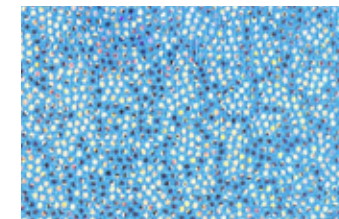
Part: 41227
Material Type: Iridescent
Color Name: Pink
PMS Match: 7424C
Thread Match: 40956
Ming Shyang Code: D1046



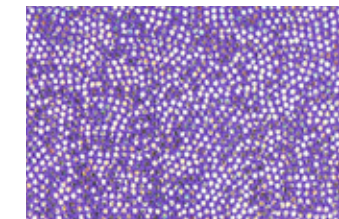
Part: 40449
Material Type: Iridescent
Color Name: Orange
PMS Match: 1645C
Thread Match: 39485
Ming Shyang Code: D10007



Part: 41610
Material Type: Iridescent
Color Name: Green
PMS Match: 367C
Thread Match: 38760
Ming Shyang Code: D231



Part: 41226
Material Type: Iridescent
Color Name: Blue
PMS Match: 7703C
Thread Match: 38248
Ming Shyang Code: D30114



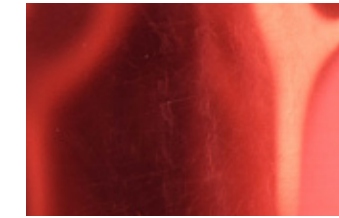
Part: 40451
Material Type: Iridescent
Color Name: Purple
PMS Match: 267C
Thread Match: 40911
Ming Shyang Code: D625

FOIL MATERIAL GUIDELINES

- **HEAT SEAL:** Yes.
- **EMBROIDERY:** No.
- **PRINT:** No.
- **LASER CUT:** Yes - no restrictions.
- **APPLIQUÉ:** Single layer or top layer appliqué only.
2 layer maximum.
- **MATERIAL CONTENT:** 100% polyester.
- **CARRIER PAPER:** No requirements.



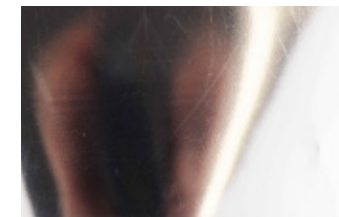
Part: 43109
Material Type: Foil
Color Name: Black
PMS Match: PMS Black C
Thread Match: N/A
Ming Shyang Code: N/A



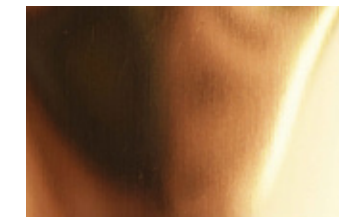
Part: 43012
Material Type: Foil
Color Name: Red
PMS Match: 185C
Thread Match: N/A
Ming Shyang Code: N/A



Part: 43013
Material Type: Foil
Color Name: Royal
PMS Match: 300C
Thread Match: N/A
Ming Shyang Code: N/A



Part: 43427
Material Type: Foil
Color Name: Silver
PMS Match: 435C
Thread Match: N/A
Ming Shyang Code: N/A



Part: 43426
Material Type: Foil
Color Name: Gold
PMS Match: 871C
Thread Match: N/A
Ming Shyang Code: N/A



Part: 43111
Material Type: Foil
Color Name: Spectrum
PMS Match: N/A
Thread Match: N/A
Ming Shyang Code: N/A



Part: 43016
Material Type: Foil
Color Name: Rainbow
PMS Match: N/A
Thread Match: N/A
Ming Shyang Code: N/A

LEATHER MATERIAL GUIDELINES

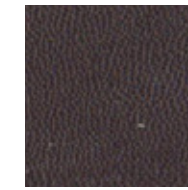
- **HEAT SEAL:** Yes.
- **EMBROIDERY:** Yes - no restrictions.
- **PRINT:** No.
- **LASER CUT:** Yes - no restrictions. Laser etchable.
- **APPLIQUÉ:** Single layer or top layer appliqué only. 3 layer maximum.
- **MATERIAL CONTENT:** 100% polyester.
- **CARRIER PAPER:** No requirements.



Color 1
PMS Black 6C
Part: 42428



Color 3
PMS 7533C
Part: 42764



Color 4
PMS 412C
Part: 43495



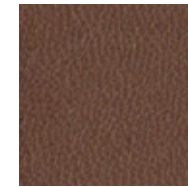
Color 5
PMS Black 3C
Part: 43341



Color 6
PMS 426C
Part: 43496



Color 7
PMS 440C
Part: 43497



Color 8
PMS 4625C
Part: 43052



Color 10
PMS 4645C
Part: 42615



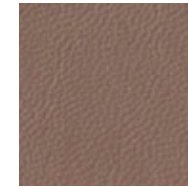
Color 12
PMS 7624C
Part: 43194



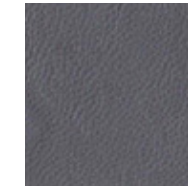
Color 13
PMS 1245C
Part: 42765



Color 15
PMS Black 5C
Part: 43498



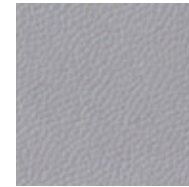
Color 16
PMS 7519C
Part: 43001



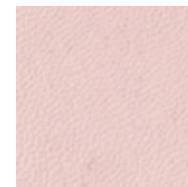
Color 17
PMS Cool Gray 10C
Part: 43344



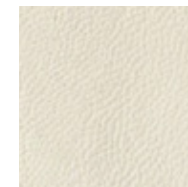
Color 18
PMS 2380C
Part: 42477



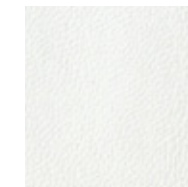
Color 19
PMS 422C
Part: 43053



Color 20
PMS 7611C
Part: 43003



Color 21
PMS 7534C
Part: 43028



Color 22
PMS Bright White
Part: 42427

TOOLS AND LIBRARIES EMPOWERING YOU

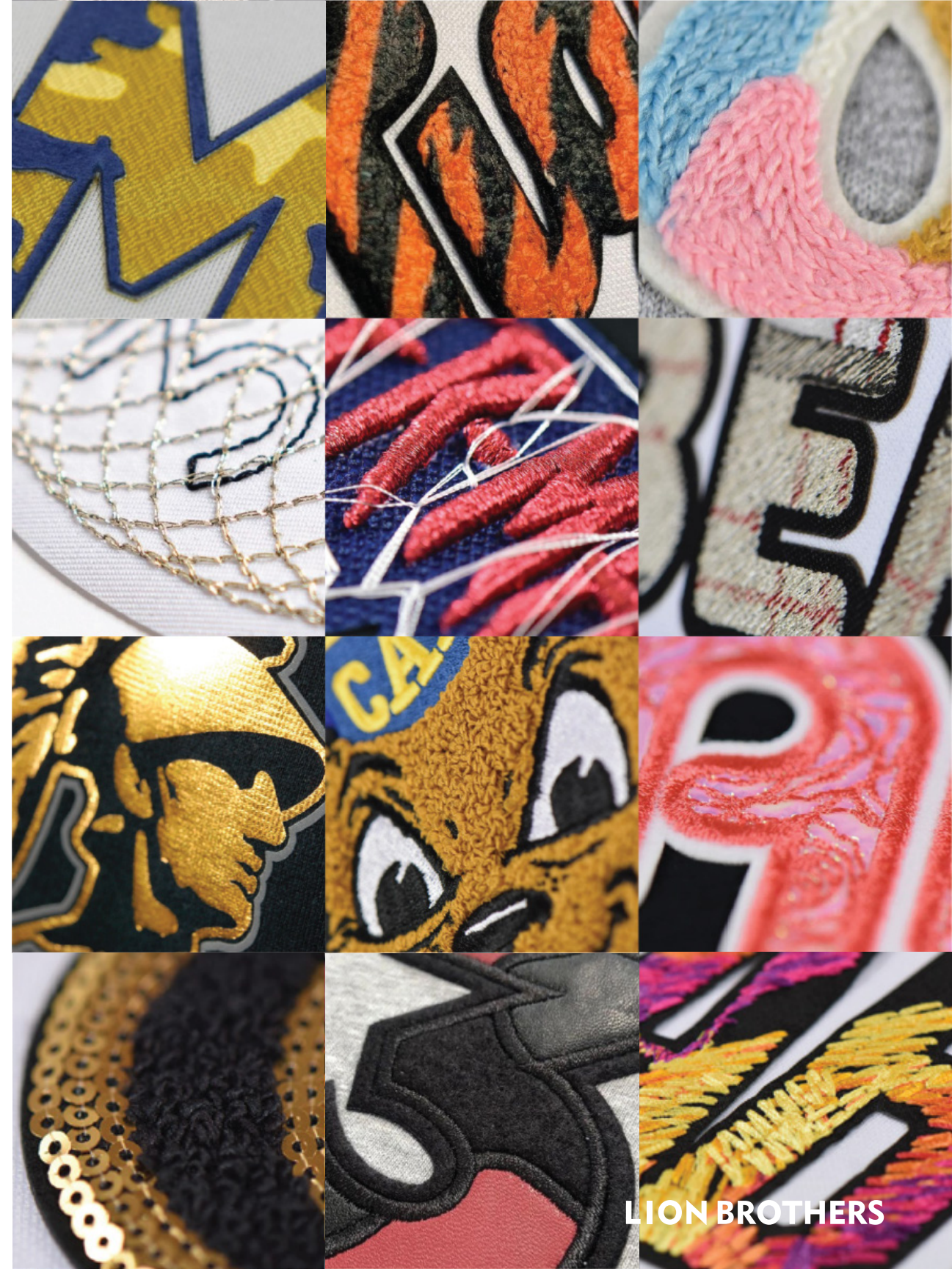
Lion offers at-a-glance tools that simplify specific material categories. For availability, please contact your assigned Lion sales representative or merchandiser.

- **STITCH LIBRARY** – Lion’s embroidery offerings with examples of different stitch patterns, densities, and motif stitching.
- **CHENILLE GUIDE** – Lion’s chenille based products with examples of different chenille thread types, heights, and specialty techniques.
- **SILICONE GUIDE** – Lion’s silicone offerings with examples of different silicone finishes, heights, specialty techniques, and color cards.
- **LION CORE PRODUCTS** – A collection of simplified designs showing different techniques and material capabilities that serve as Lion’s foundation.
- **SPECIALTY THREAD OPTIONS** - Including satin, matte, metallic, and more.



LION BRINGS BRANDS TO LIFE

THE MATERIALS SEEN IN THIS BOOK CAN BE COMBINED TO
CREATE A VIRTUALLY LIMITLESS NUMBER OF CUSTOM DESIGNS,
MADE TO SHOWCASE YOUR BRANDS IDENTITY.



LION BROTHERS

CONTACT INFORMATION

UNITED STATES HEADQUARTERS

RED BROOK CORPORATE CENTER, SUITE 410

300 RED BROOK BLVD.

OWINGS MILLS, MD 21117

PH: 800-365-6543



LIONBROTHERS.COM